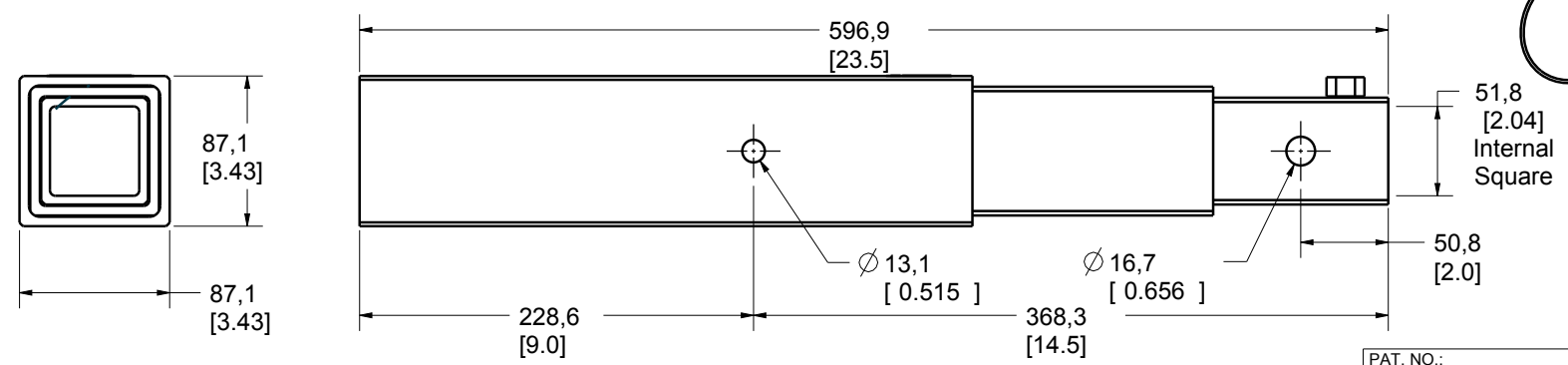
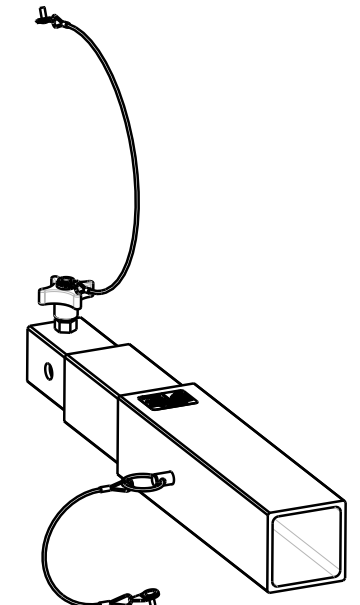


Product number: A2126-38



PAT. NO.:		©11/03/2013	©
PRODUITS DE SERVICE PUBLICS INNOVA INC. INNOVA PUBLIC UTILITY PRODUCTS INC.			
<small>© 9105-0732 QUEBEC INC. and under exclusive license to INNOVA PUBLIC UTILITY PRODUCTS INC. (hereafter « INNOVA »). All rights reserved. Protected under the Copyright Act of Canada and international treaties and agreements regarding copyrights. Violators are subject to prosecution and other legal recourses for infringement. Any reproduction, adaptation or other use or disclosure whatsoever, in totality or in part, and in any form or by any means whatsoever, strictly forbidden and requires the prior written approval of INNOVA. All data is the exclusive property of 9105-0732 QUEBEC INC. and under exclusive license to INNOVA and cannot be used nor disclosed in any way either without the prior written approval of INNOVA.</small>			
WEIGHT:	TITLE:		
22 Lb	Adapter for counter weigh base		
10 Kg	51mm - 89mm (2" to 3-1/2")		
COLOR:	MATERIAL:	SHEET(S):	PROJECT:
Zinc plated	Steel	1 / 4	A2126-38

8

7

6

5

4

3

2

1

Product number: A2126-38

H

G

F

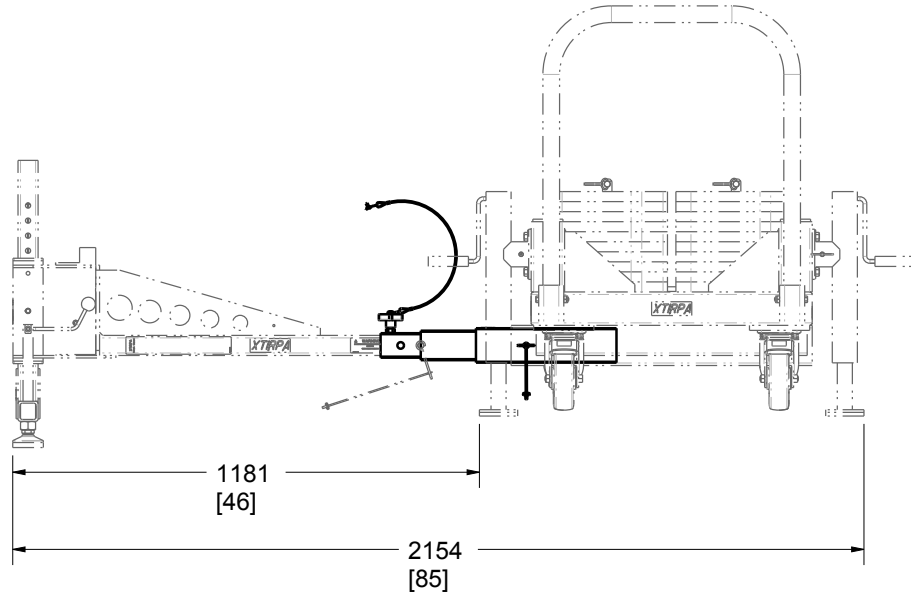
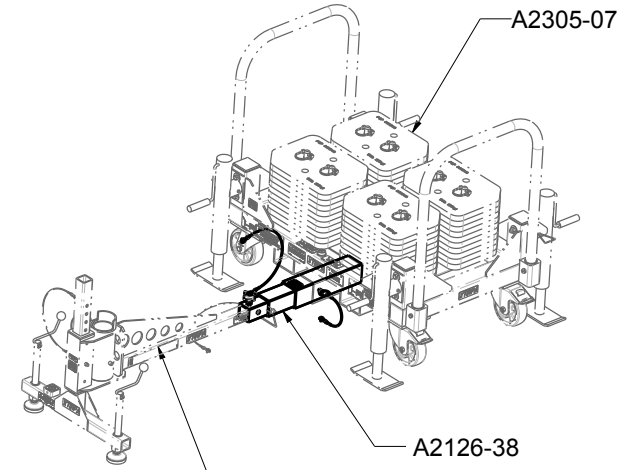
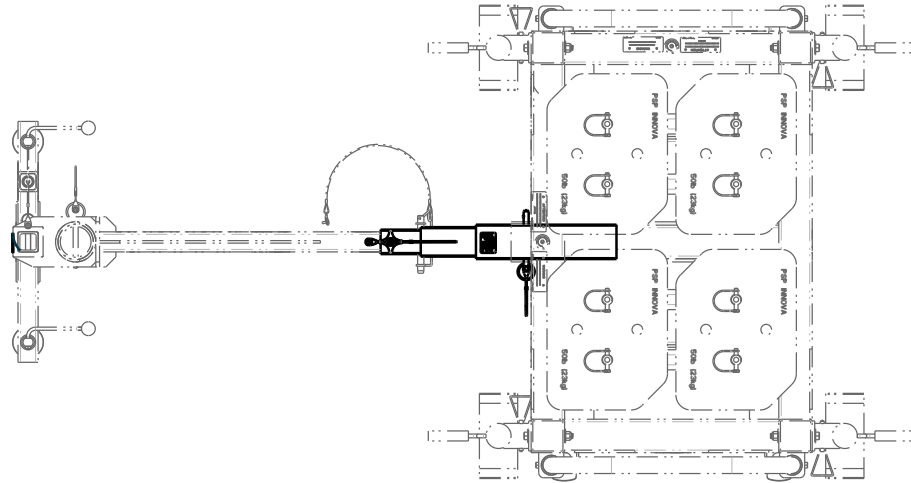
E

D

C

B

A



PAT. NO.:		©11/03/2013	©
PRODUITS DE SERVICE PUBLICS INNOVA INC. INNOVA PUBLIC UTILITY PRODUCTS INC.			
<small>© 9105-0732 QUEBEC INC. and under exclusive license to INNOVA PUBLIC UTILITY PRODUCTS INC. (hereafter « INNOVA »). All rights reserved. Protected under the Copyright Act of Canada and international treaties and agreements regarding copyrights. Violators are subject to prosecution and other legal recourses for infringement. Any reproduction, adaptation or other use or disclosure whatsoever, in totality or in part, and in any form or by any means whatsoever, strictly forbidden and requires the prior written approval of INNOVA. All data is the exclusive property of 9105-0732 QUEBEC INC. and under exclusive license to INNOVA and cannot be used nor disclosed in any way either without the prior written approval of INNOVA.</small>			
WEIGHT:		TITLE:	
22 Lb		Adapter for counter weigh base	
10 Kg		51mm - 89mm (2" to 3-1/2")	
COLOR:	MATERIAL:	SHEET(S):	PROJECT:
Zinc plated	Steel	2 / 4	A2126-38

8

7

6

5

4

3

2

1

Product number: A2126-38

SPECIFICATIONS

This equipment is considered as part of a personal fall arrest system (PFAS). It is only to be used in conjunction with a personal fall arrest system that limits the maximum arrest force (MAF).

Working load limit (WLL): 1,112 N (250 lbf)
 Max design capacity: 11,121 N (2,500 lbf)

Note: The structure must meet the maximum design capacity.

STANDARDS

Meets the following standards:
 OSHA Personal fall arrest system - 1910.66 App C
 ANSI Safety requirements for personal fall arrest system, subsystems and components Z359.1 (R1999) / 2007
 CAN/CSA Fall arresters, vertical lifelines, and rails Z259.2 1-98
 CE EN 795: 2012 Type E

MATERIAL AND CONSTRUCTION

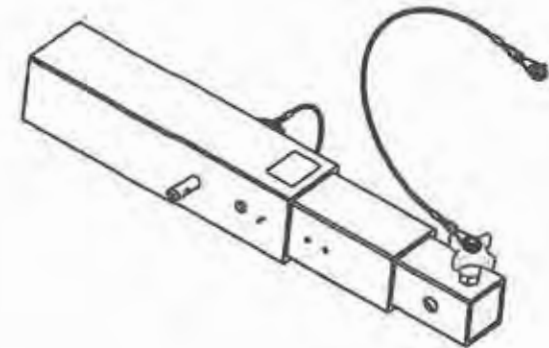
Tubes: HSS Steel A500
 Pin: Steel zinc plated
 Handle: Black Thermoplastic
 Lanyard - Nylon covered Stainless Steel Cable
 Finish - Clear Zinc plated, ASTM B-633-11, Type V, SC3,
 Welding Certification - CSA W59 & W47.1.

RESTRICTIONS

This product is to be used only with products approved by Innova Public Utility Products inc.

**The positioning pins must always be in place when manoeuvring personnel. Otherwise, serious injuries may occur.

Periodic inspections of hardware must be done. In the occurrence of a fall or the safety of the equipment is in doubt, equipment must be immediately removed from service and inspected by qualified personnel before reuse.

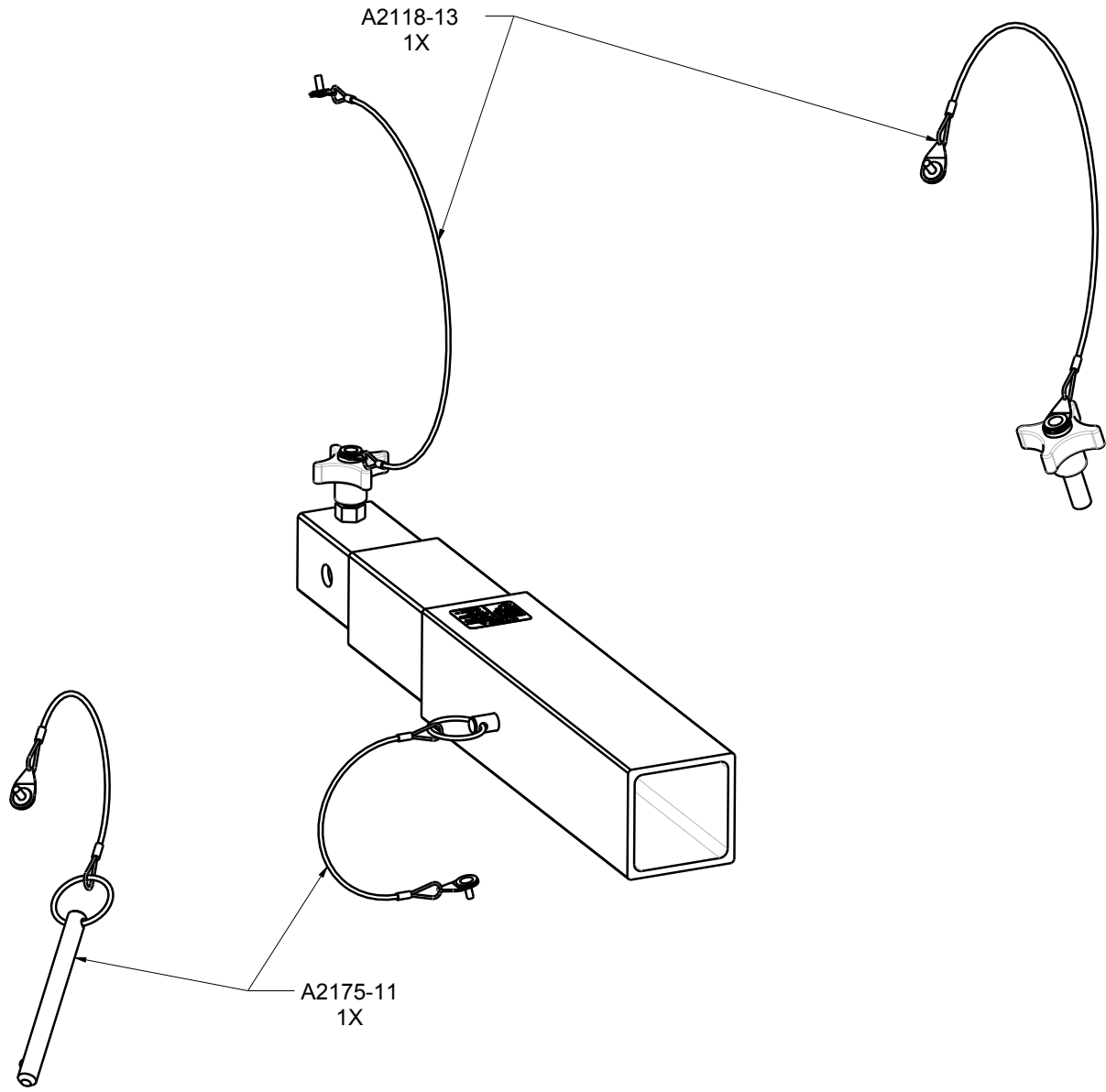


PAT NO.		011/03/2013 0	
PRODUITS DE SERVICE PUBLICS INNOVA INC INNOVA PUBLIC UTILITY PRODUCTS INC.			
<small>© INNOVATED QUEBEC INC. and other associated licenses to INNOVA PUBLIC UTILITY PRODUCTS INC. Intellectual & INNOVA INC. All rights reserved. Protected under the Copyright Act of Canada and international treaties and agreements regarding copyright. Violators are subject to prosecution and other legal penalties for infringement. Any reproduction, adaptation or other use or disclosure without the written approval of INNOVA INC. is strictly prohibited. INNOVA INC. and other associated licenses to INNOVA and cannot be used for other purposes without the prior written approval of INNOVA INC.</small>			
WEIGHT:	TITLE		
22 Lb	Adapter for counter weigh base		
10 Kg	51mm - 89mm [2" to 3-1/2"]		
COLOR:	MATERIAL:	SHEETS:	DESIGN:
Zinc plated	Steel	3 / 4	A2126-38

Product number: A2126-38

H
G
F
E
D
C
B
A

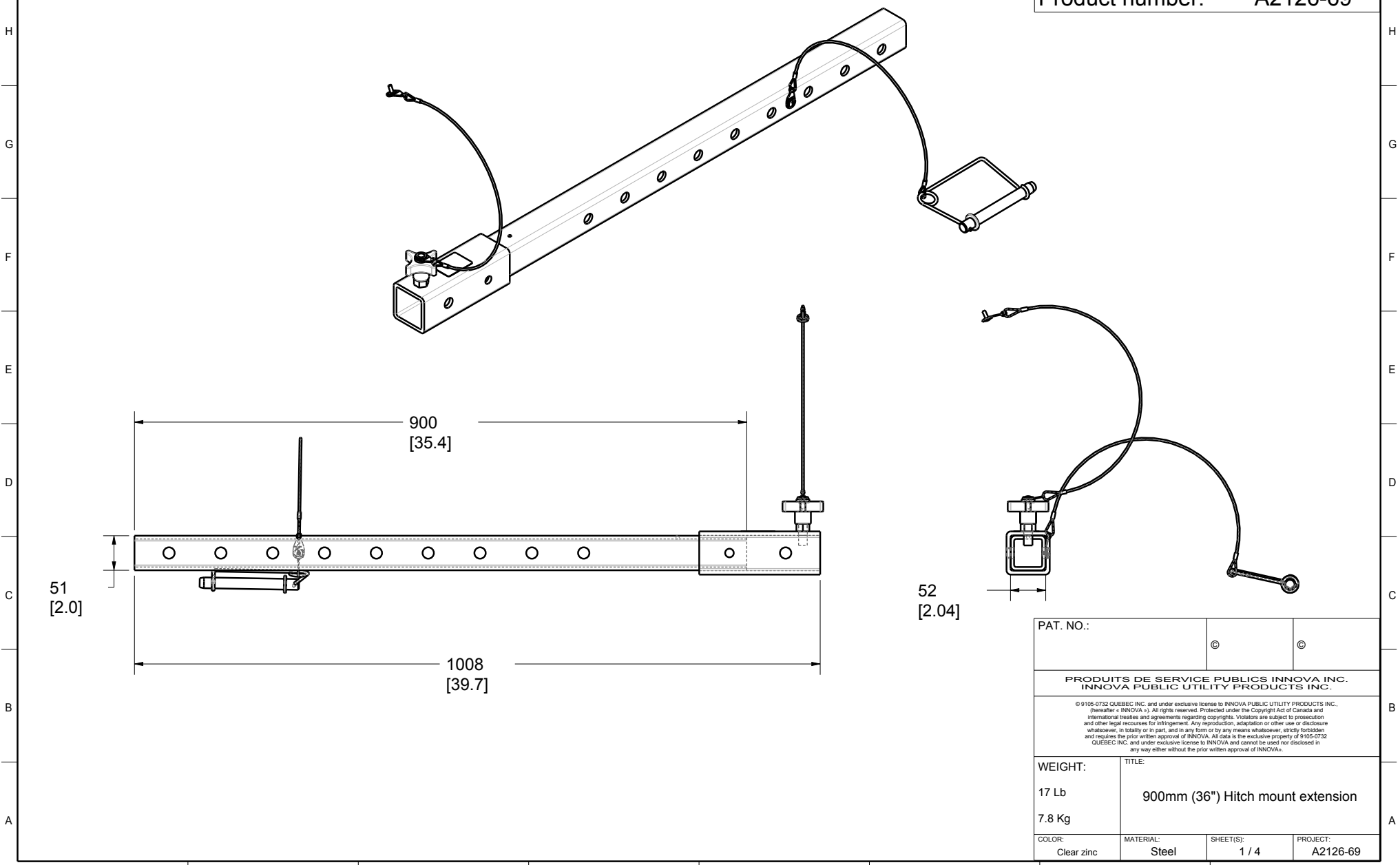
8 7 6 5 4 3 2 1



PAT. NO.:		©11/03/2013	©
PRODUITS DE SERVICE PUBLICS INNOVA INC. INNOVA PUBLIC UTILITY PRODUCTS INC.			
<small>© 9105-0732 QUEBEC INC. and under exclusive license to INNOVA PUBLIC UTILITY PRODUCTS INC. (hereafter « INNOVA »). All rights reserved. Protected under the Copyright Act of Canada and international treaties and agreements regarding copyrights. Violators are subject to prosecution and other legal recourses for infringement. Any reproduction, adaptation or other use or disclosure whatsoever, in totality or in part, and in any form or by any means whatsoever, strictly forbidden and requires the prior written approval of INNOVA. All data is the exclusive property of 9105-0732 QUEBEC INC. and under exclusive license to INNOVA and cannot be used nor disclosed in any way either without the prior written approval of INNOVA.</small>			
WEIGHT:		TITLE:	
22 Lb		Adapter for counter weigh base 51mm - 89mm (2" to 3-1/2")	
10 Kg			
COLOR:	MATERIAL:	SHEET(S):	PROJECT:
Zinc plated	Steel	4 / 4	A2126-38

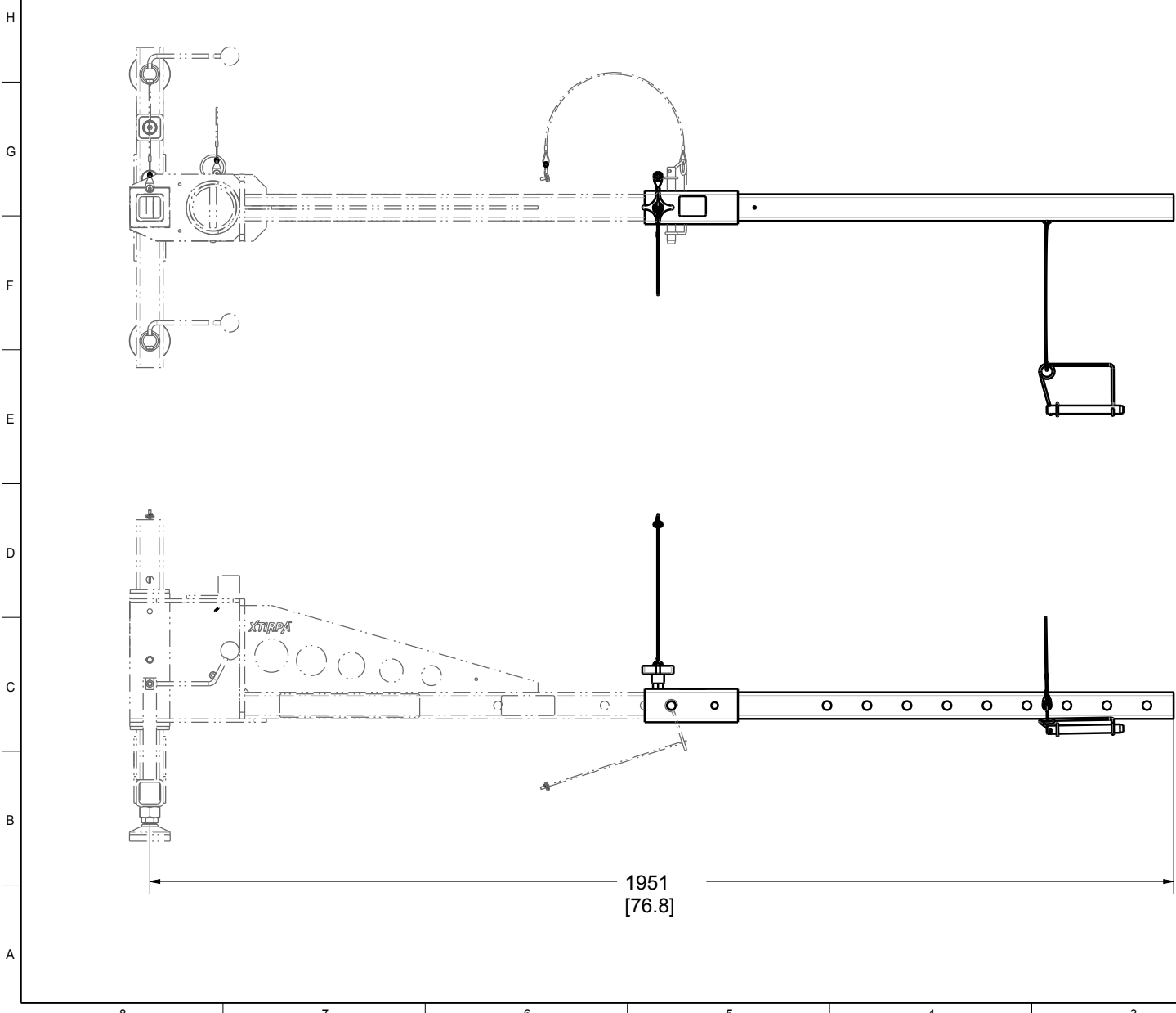
8 7 6 5 4 3 2 1

Product number: A2126-69



PAT. NO.:		©	©
PRODUITS DE SERVICE PUBLICS INNOVA INC. INNOVA PUBLIC UTILITY PRODUCTS INC.			
<small>© 9105-0732 QUEBEC INC. and under exclusive license to INNOVA PUBLIC UTILITY PRODUCTS INC. (hereafter « INNOVA »). All rights reserved. Protected under the Copyright Act of Canada and international treaties and agreements regarding copyrights. Violators are subject to prosecution and other legal recourses for infringement. Any reproduction, adaptation or other use or disclosure whatsoever, in totality or in part, and in any form or by any means whatsoever, strictly forbidden and requires the prior written approval of INNOVA. All data is the exclusive property of 9105-0732 QUEBEC INC. and under exclusive license to INNOVA and cannot be used nor disclosed in any way either without the prior written approval of INNOVA.</small>			
WEIGHT:		TITLE:	
17 Lb		900mm (36") Hitch mount extension	
7.8 Kg			
COLOR:	MATERIAL:	SHEET(S):	PROJECT:
Clear zinc	Steel	1 / 4	A2126-69

Product number: A2126-69



PAT. NO.:		©	©
PRODUITS DE SERVICE PUBLICS INNOVA INC. INNOVA PUBLIC UTILITY PRODUCTS INC.			
<small>© 9105-0732 QUEBEC INC. and under exclusive license to INNOVA PUBLIC UTILITY PRODUCTS INC. (hereafter « INNOVA »). All rights reserved. Protected under the Copyright Act of Canada and international treaties and agreements regarding copyrights. Violators are subject to prosecution and other legal recourses for infringement. Any reproduction, adaptation or other use or disclosure whatsoever, in totally or in part, and in any form or by any means whatsoever, strictly forbidden and requires the prior written approval of INNOVA. All data is the exclusive property of 9105-0732 QUEBEC INC. and under exclusive license to INNOVA and cannot be used nor disclosed in any way either without the prior written approval of INNOVA.</small>			
WEIGHT:	TITLE:		
17 Lb	900mm (36") Hitch mount extension		
7.8 Kg			
COLOR:	MATERIAL:	SHEET(S):	PROJECT:
Clear zinc	Steel	2 / 4	A2126-69

Product number: **A2126-69**

SPECIFICATIONS

H This equipment is considered as part of a personal fall arrest system (PFAS).

It is only to be used in conjunction with a personal fall arrest system that limits the maximum arrest force (MAF).

G Working load limit (WLL): 1,112 N (250 lbf)

Max design capacity: 11,121 N (2,500 lbf)

Note: The structure must meet the maximum design capacity.

STANDARDS

F Meets the following standards:

OSHA Personal fall arrest system - 1910.66 App C

ANSI Safety requirements for personal fall arrest system, subsystems and components Z359.1 (R1999) / 2007

CAN/CSA Fall arresters, vertical lifelines, and rails Z259.2.1-98

CE EN 795: 2012 Type B

MATERIAL AND CONSTRUCTION

D Tubes: HSS Steel A500

Pin: Steel zinc plated

Handle: Black Thermoplastic

Lanyard : Nylon covered Stainless Steel Cable

Finish : Clear Zinc plated, ASTM B-633-11, Type V, SC3.

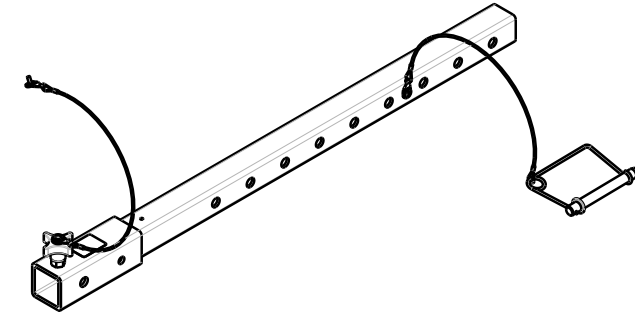
Welding Certification : CSA W59 & W47.1

RESTRICTIONS

B This product is to be used only with products approved by Innova Public Utility Products inc.

**The positioning pins must always be in place when manoeuvring personnel. Otherwise, serious injuries may occur.

A Periodic inspections of hardware must be done. In the occurrence of a fall or the safety of the equipment is in doubt, equipment must be immediately removed from service and inspected by qualified personnel before reuse.



Stamping space

PAT. NO.:		©	©
PRODUITS DE SERVICE PUBLICS INNOVA INC. INNOVA PUBLIC UTILITY PRODUCTS INC.			
<small>© 9105-0732 QUEBEC INC. and under exclusive license to INNOVA PUBLIC UTILITY PRODUCTS INC. (hereafter « INNOVA »). All rights reserved. Protected under the Copyright Act of Canada and international treaties and agreements regarding copyrights. Violators are subject to prosecution and other legal recourses for infringement. Any reproduction, adaptation or other use or disclosure whatsoever, in totality or in part, and in any form or by any means whatsoever, strictly forbidden and requires the prior written approval of INNOVA. All data is the exclusive property of 9105-0732 QUEBEC INC. and under exclusive license to INNOVA and cannot be used nor disclosed in any way either without the prior written approval of INNOVA.</small>			
WEIGHT:	TITLE:		
17 Lb	900mm (36") Hitch mount extension		
7.8 Kg			
COLOR:	MATERIAL:	SHEET(S):	PROJECT:
Clear zinc	Steel	3 / 4	A2126-69

8

7

6

5

4

3

2

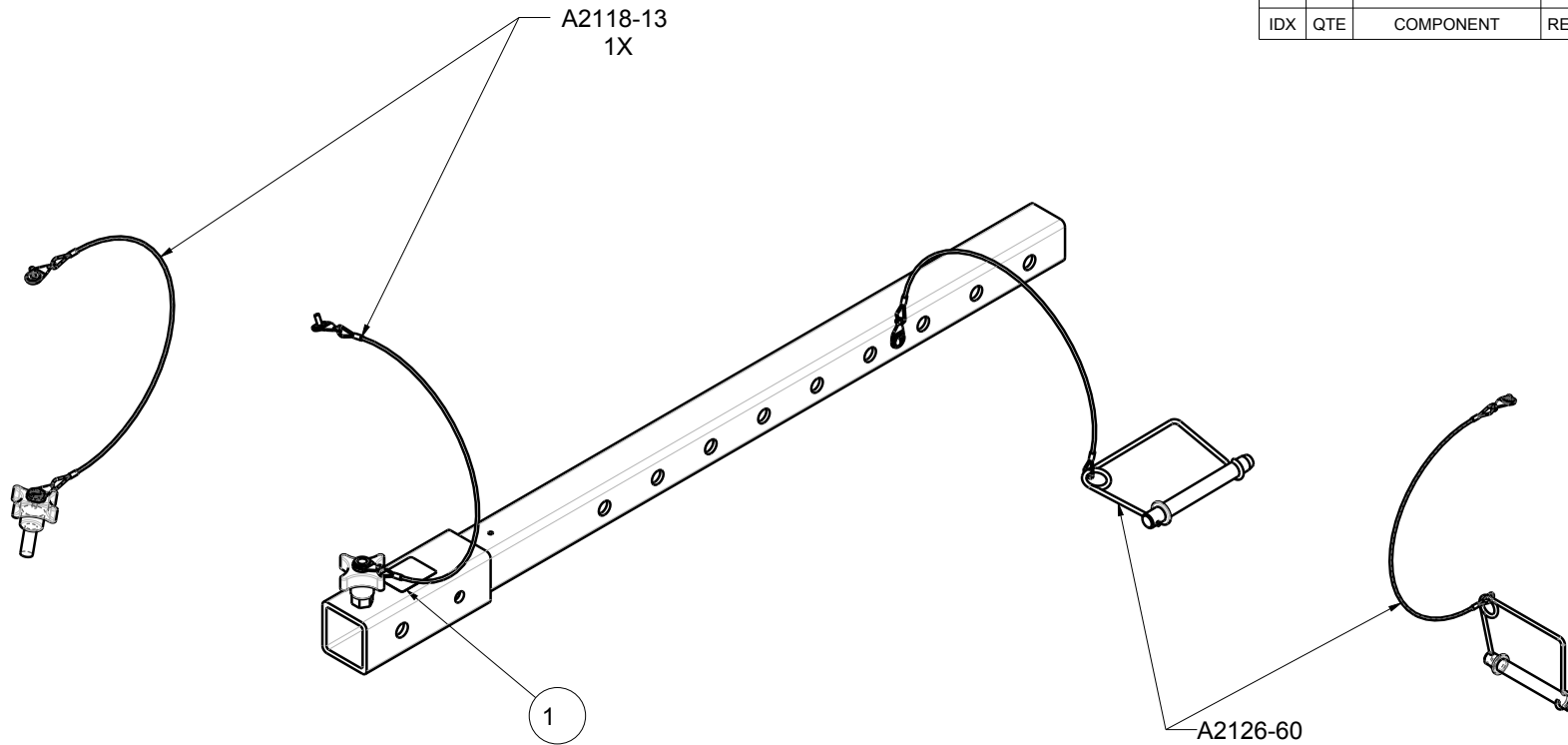
1

Product number: A2126-69

1	1	S2001-005	RevC	Label XTIRPA serial number
IDX	QTE	COMPONENT	REV	DESCRIPTION

H
G
F
E
D
C
B
A

H
G
F
E
D
C
B
A



PAT. NO.:		©	©
PRODUITS DE SERVICE PUBLICS INNOVA INC. INNOVA PUBLIC UTILITY PRODUCTS INC.			
<small>© 9105-0732 QUEBEC INC. and under exclusive license to INNOVA PUBLIC UTILITY PRODUCTS INC. (hereafter « INNOVA »). All rights reserved. Protected under the Copyright Act of Canada and international treaties and agreements regarding copyrights. Violators are subject to prosecution and other legal recourses for infringement. Any reproduction, adaptation or other use or disclosure whatsoever, in totality or in part, and in any form or by any means whatsoever, strictly forbidden and requires the prior written approval of INNOVA. All data is the exclusive property of 9105-0732 QUEBEC INC. and under exclusive license to INNOVA and cannot be used nor disclosed in any way either without the prior written approval of INNOVA.</small>			
WEIGHT:		TITLE:	
17 Lb		900mm (36") Hitch mount extension	
7.8 Kg			
COLOR:	MATERIAL:	SHEET(S):	PROJECT:
Clear zinc	Steel	4 / 4	A2126-69

8

7

6

5

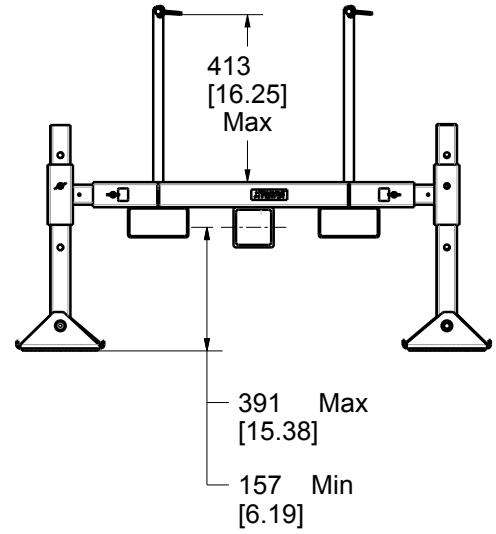
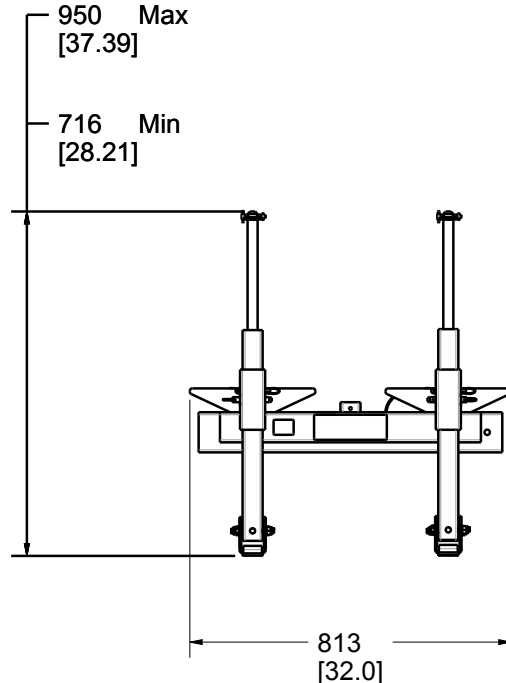
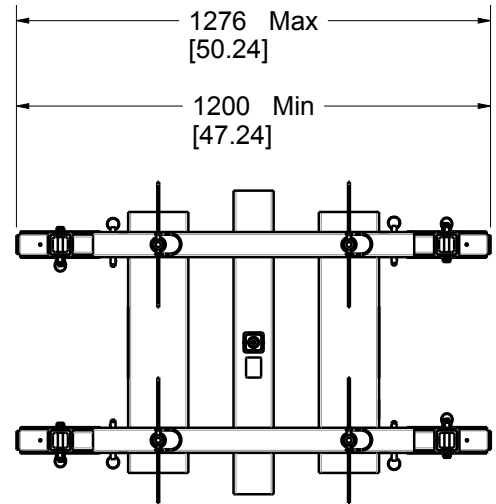
4


3

2

1

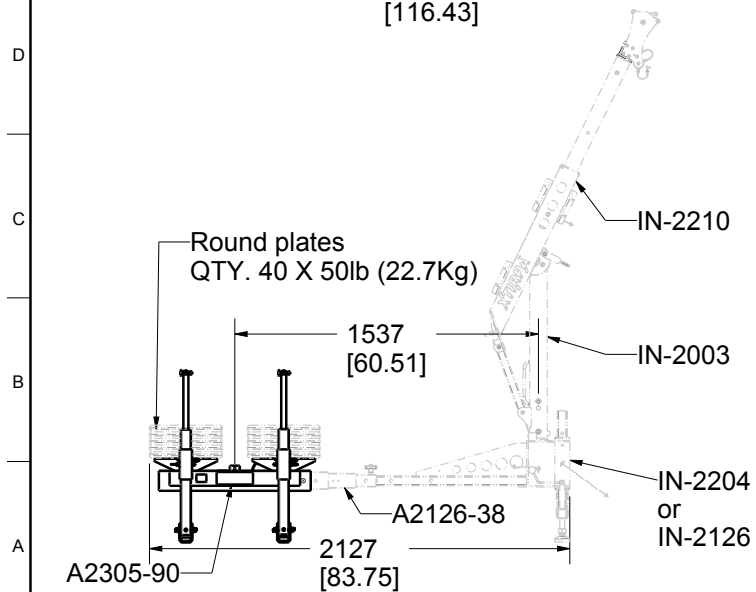
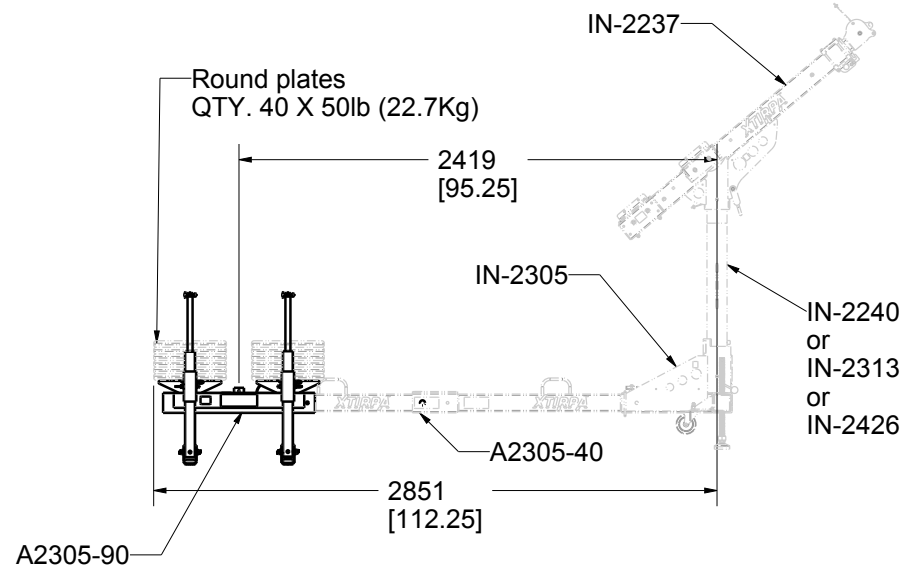
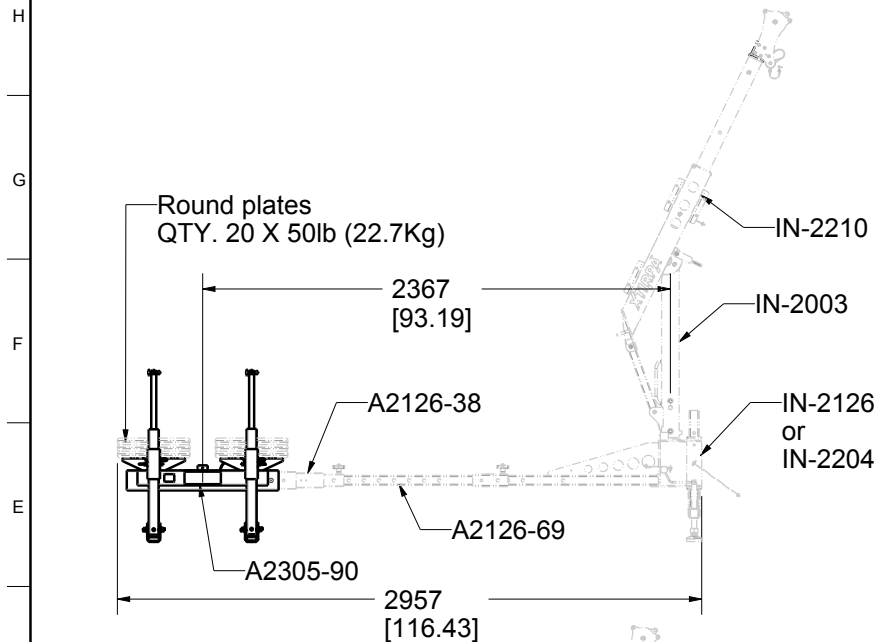
Product number: A2305-90



PAT.NO.:				
PRODUITS DE SERVICE PUBLICS INNOVA INC. INNOVA PUBLIC UTILITY PRODUCTS INC.				
<small>© 9105-0732 QUEBEC INC. and under exclusive license to INNOVA PUBLIC UTILITY PRODUCTS INC. (hereafter « INNOVA »). All rights reserved. Protected under the Copyright Act of Canada and international treaties and agreements regarding copyrights. Violators are subject to prosecution and other legal recourse for infringement. Any reproduction, adaptation or other use or disclosure whatsoever, in totality or in part, and in any form or by any means whatsoever, strictly forbidden and requires the prior written approval of INNOVA. All data is the exclusive property of 9105-0732 QUEBEC INC. and under exclusive license to INNOVA and cannot be used nor disclosed in any way either without the prior written approval of INNOVA.</small>				
WEIGHT:	TITLE:			
186.0 Lb 84.4 Kg	Counterweight support			
COLOR:	Material:	SHEET(S):	PROJET:	Rev.
Zinc plated	Steel	1 / 5	A2305-90	05

A2305-90 Configuration requirements (CSA,OSHA,ANSI)

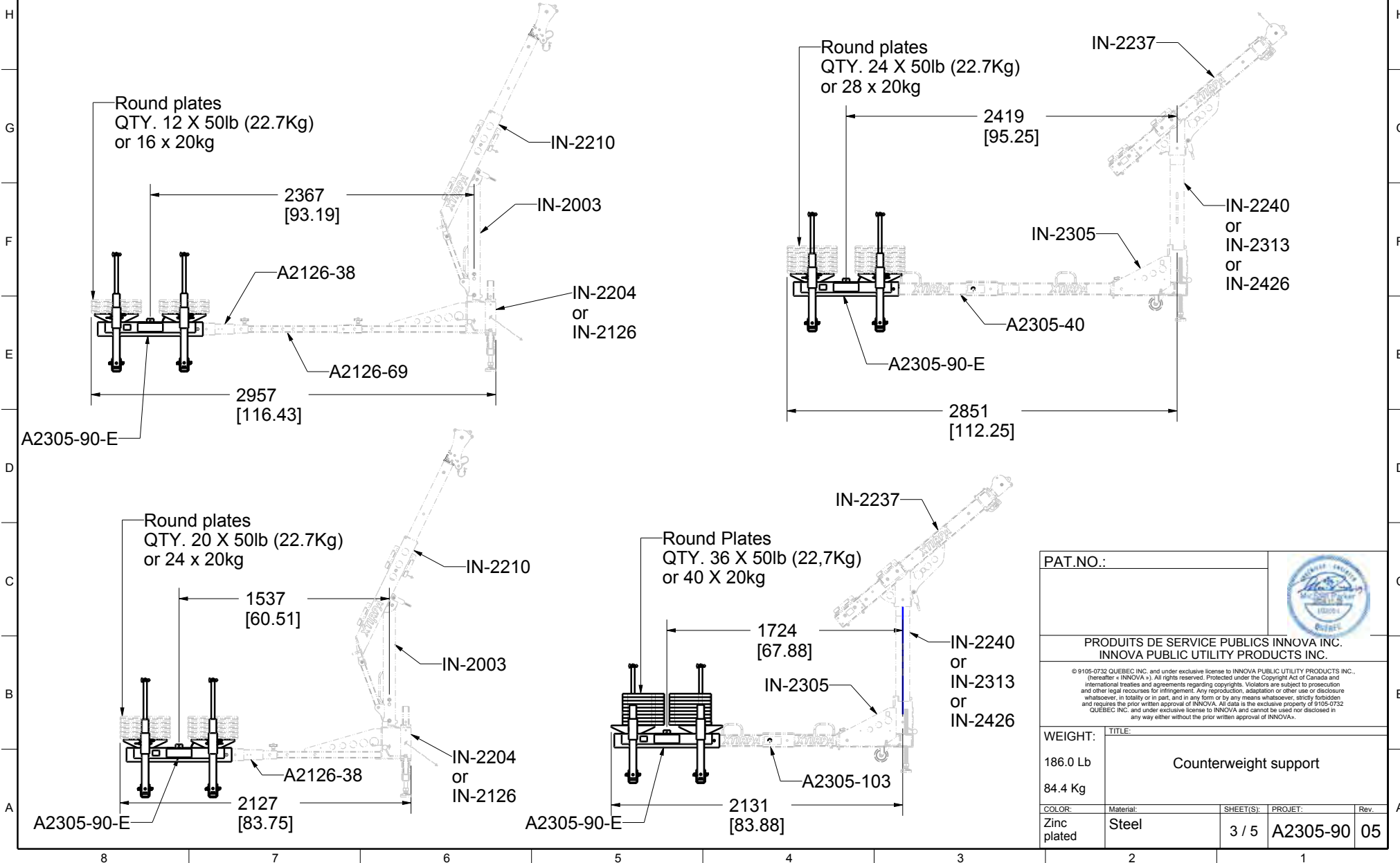
Product number: **A2305-90**



PAT.NO.:		
PRODUITS DE SERVICE PUBLICS INNOVA INC. INNOVA PUBLIC UTILITY PRODUCTS INC.		
<small>© 9105-0732 QUEBEC INC. and under exclusive license to INNOVA PUBLIC UTILITY PRODUCTS INC. (hereafter « INNOVA »). All rights reserved. Protected under the Copyright Act of Canada and international treaties and agreements regarding copyrights. Violators are subject to prosecution and other legal recourses for infringement. Any reproduction, adaptation or other use or disclosure whatsoever, in totality or in part, and in any form or by any means whatsoever, strictly forbidden and requires the prior written approval of INNOVA. All data is the exclusive property of 9105-0732 QUEBEC INC. and under exclusive license to INNOVA and cannot be used nor disclosed in any way either without the prior written approval of INNOVA.</small>		
WEIGHT:	TITLE:	
186.0 Lb 84.4 Kg	Counterweight support	
COLOR:	Material:	SHEET(S):
Zinc plated	Steel	2 / 5
		PROJET:
		A2305-90
		Rev:
		05

A2305-90 Configuration requirements (EN 795,TS16415)

Product number: **A2305-90**



PAT.NO.:		
PRODUITS DE SERVICE PUBLICS INNOVA INC. INNOVA PUBLIC UTILITY PRODUCTS INC.		
<small>© 9105-0732 QUEBEC INC. and under exclusive license to INNOVA PUBLIC UTILITY PRODUCTS INC. (hereafter « INNOVA »). All rights reserved. Protected under the Copyright Act of Canada and international treaties and agreements regarding copyrights. Violators are subject to prosecution and other legal resources for infringement. Any reproduction, adaptation or other use or disclosure whatsoever, in totality or in part, and in any form or by any means whatsoever, strictly forbidden and requires the prior written approval of INNOVA. All data is the exclusive property of 9105-0732 QUEBEC INC. and under exclusive license to INNOVA and cannot be used nor disclosed in any way either without the prior written approval of INNOVA.</small>		
WEIGHT:	TITLE:	
186.0 Lb 84.4 Kg	Counterweight support	
COLOR:	Material:	SHEET(S):
Zinc plated	Steel	3 / 5
		PROJET:
		A2305-90
		Rev:
		05

Product number: **A2305-90**

SPECIFICATIONS

This equipment is considered as part of a personal fall arrest system (PFAS) with a maximum working capacity of 164 Kg (360 lb).

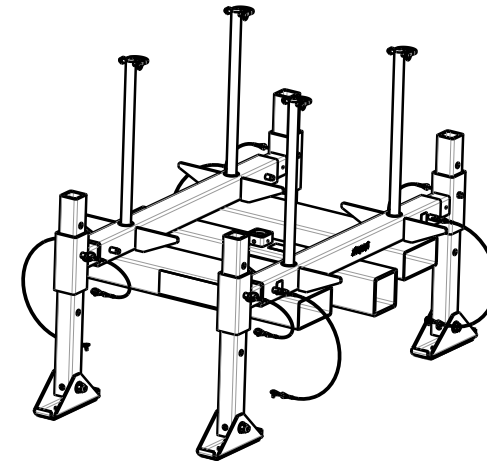
It is only to be used in conjunction with a personal fall arrest system that limits the maximum arrest force (MAF).

STANDARDS

Name	Classification	Year	Users
AS/NZS 5532	Freefall arrest	2013	1
ANSI Z359.18	D	2017	1
CSA Z259.15	AD	2022	1
OSHA 1910.140			1
OSHA 1926.502			1
EN 795	E	2012	1
TS 16415		2013	3

MATERIAL AND CONSTRUCTION

Structure:	Steel 44W
Retaining rod for weight:	Steel 44W
Retaining pin for weight:	Stainless steel
Hardwares:	Stainless steel
Finish :	Clear trivalent zinc plated ASTM B-633-13, Type V, SC 3
Welding Certification :	CSA W59 & W47.1, AWS D1.6



RESTRICTIONS

This product is to be used only with products approved by Innova Public Utility Products inc.

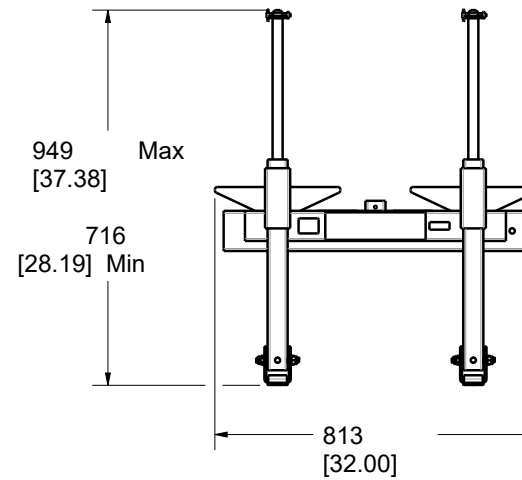
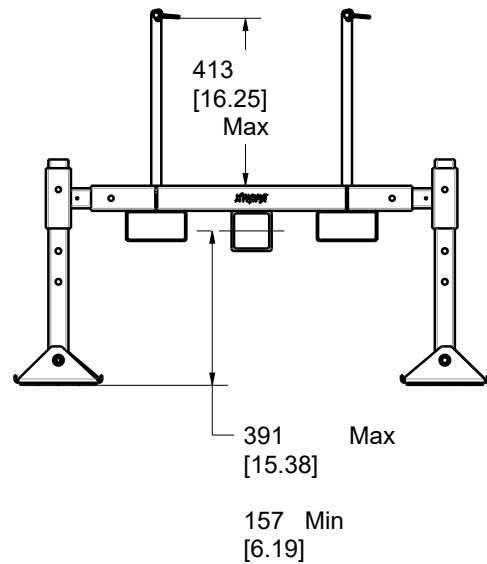
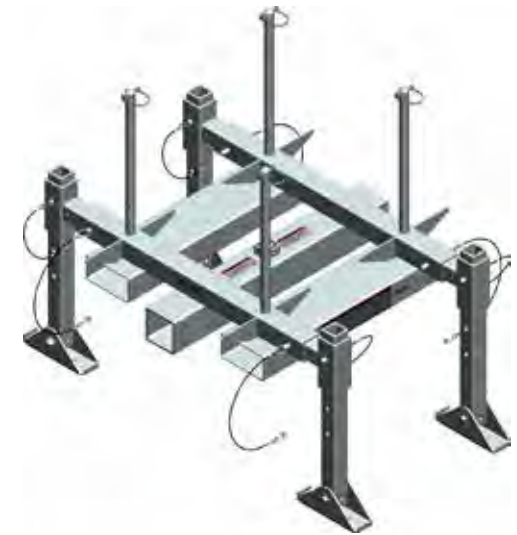
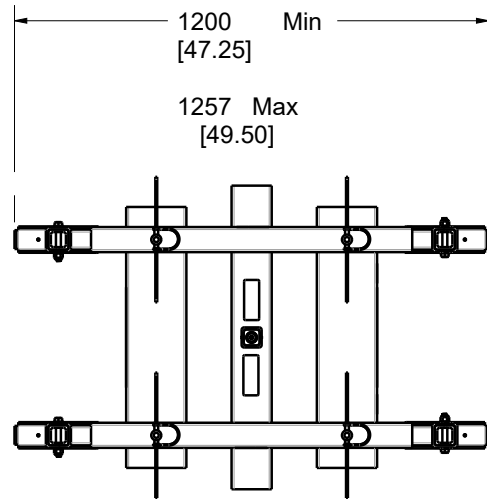
This equipment must always be operated in a level position $\pm 5^\circ$ from the horizontal and supported by its 4 levelling pads.
It is not permitted to use this system while casters are supporting the weight.

Ensure that all hardware and connecting pins are properly installed before use.

In the occurrence of a fall or that the safety of the equipment is in doubt, the equipment must be immediately removed from service and inspected by qualified personnel before reuse.

PAT.NO.:				
PRODUITS DE SERVICE PUBLICS INNOVA INC. INNOVA PUBLIC UTILITY PRODUCTS INC.				
<small>© 9105-0732 QUEBEC INC. and under exclusive license to INNOVA PUBLIC UTILITY PRODUCTS INC. (hereafter « INNOVA »). All rights reserved. Protected under the Copyright Act of Canada and international treaties and agreements regarding copyrights. Violators are subject to prosecution and other legal recourse for infringement. Any reproduction, adaptation or other use or disclosure whatsoever, in totality or in part, and in any form or by any means whatsoever, strictly forbidden and requires the prior written approval of INNOVA. All data is the exclusive property of 9105-0732 QUEBEC INC. and under exclusive license to INNOVA and cannot be used nor disclosed in any way either without the prior written approval of INNOVA.</small>				
WEIGHT:	TITLE:			
186.00lb	Counterweight support			
84.36kg				
COLOR:	Material:	SHEET(S):	PROJET:	Rev.
Zinc plated	Steel	4 / 5	A2305-90	05

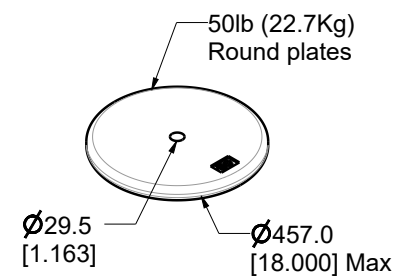
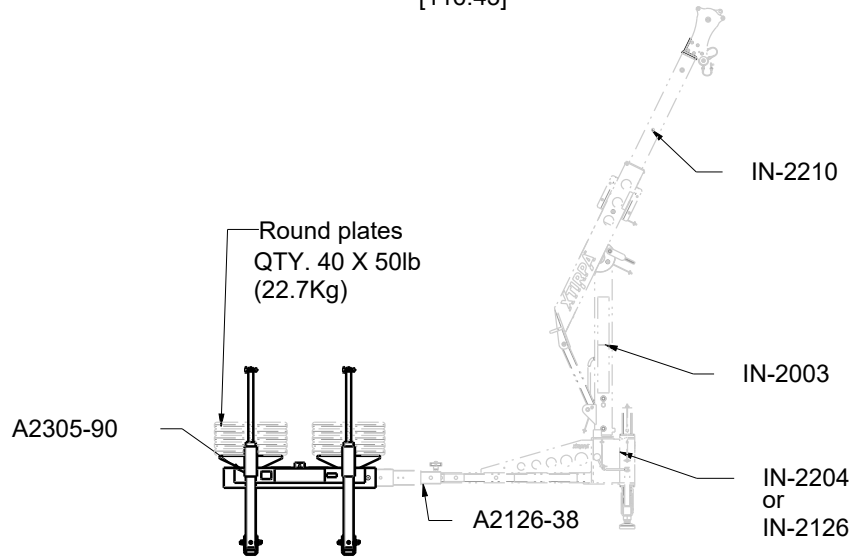
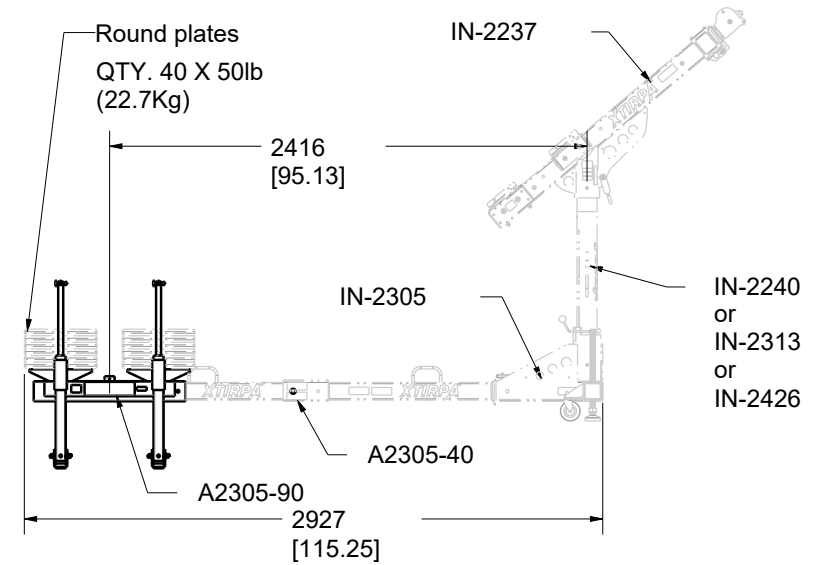
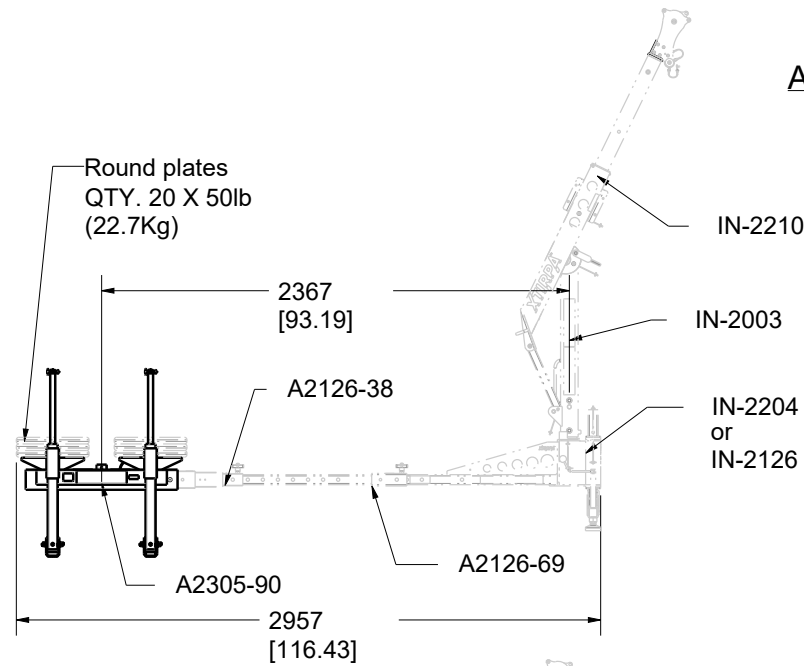
Product number: A2305-90



PAT.NO.:				
PRODUITS DE SERVICE PUBLICS INNOVA INC. INNOVA PUBLIC UTILITY PRODUCTS INC.				
<small>© 9105-0732 QUEBEC INC. and under exclusive license to INNOVA PUBLIC UTILITY PRODUCTS INC. (hereafter « INNOVA »). All rights reserved. Protected under the Copyright Act of Canada and international treaties and agreements regarding copyrights. Violators are subject to prosecution and other legal recourses for infringement. Any reproduction, adaptation or other use or disclosure whatsoever, in totally or in part, and in any form or by any means whatsoever, strictly forbidden and requires the prior written approval of INNOVA. All data is the exclusive property of 9105-0732 QUEBEC INC. and under exclusive license to INNOVA and cannot be used nor disclosed in any way either without the prior written approval of INNOVA.</small>				
WEIGHT:	TITLE:			
186 Lb 84 Kg	Counterweight support			
COLOR:	Material:	SHEET(S):	PROJET:	Rev.
Zinc plated	Steel	1 / 5	A2305-90	01

Product number: A2305-90

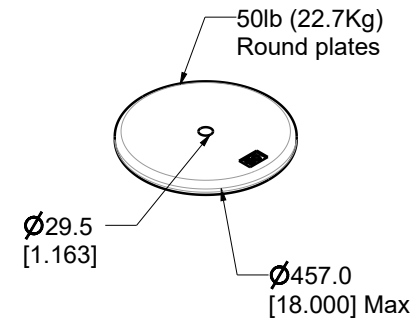
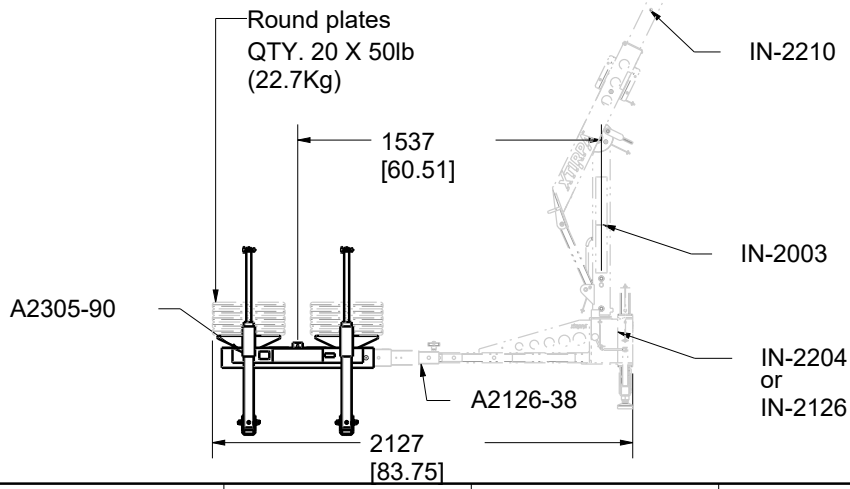
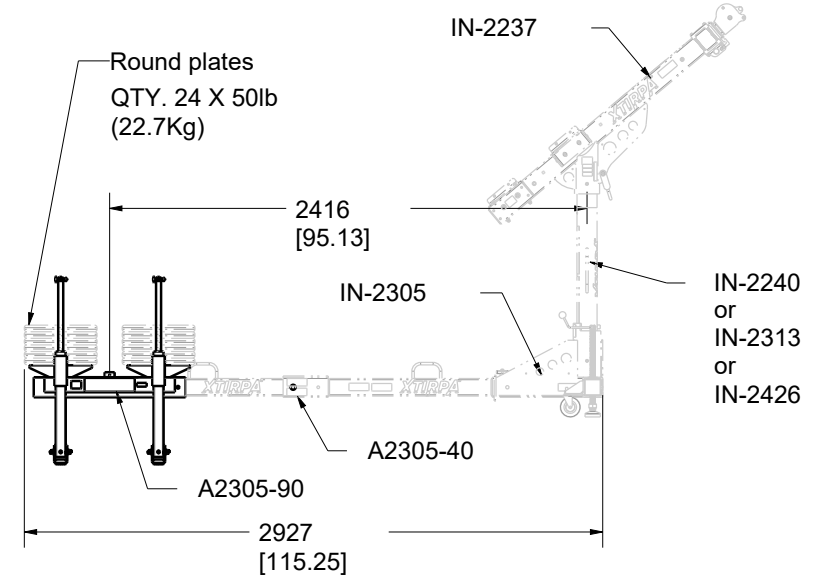
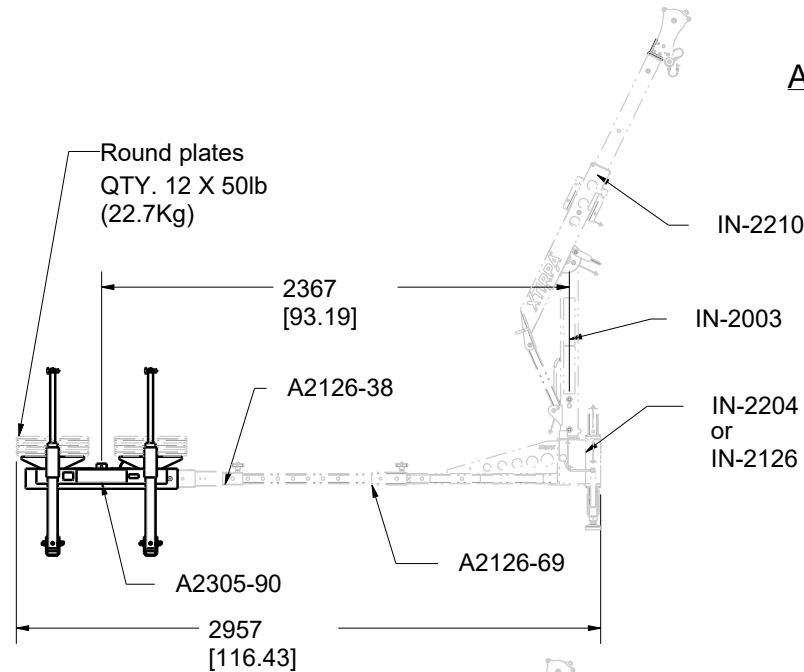
A2305-90 Configuration requirements (CSA,OSHA,ANSI)



PAT.NO.:				
PRODUITS DE SERVICE PUBLICS INNOVA INC. INNOVA PUBLIC UTILITY PRODUCTS INC.				
<small>© 9105-0732 QUEBEC INC. and under exclusive license to INNOVA PUBLIC UTILITY PRODUCTS INC. (hereafter « INNOVA »). All rights reserved. Protected under the Copyright Act of Canada and international treaties and agreements regarding copyrights. Violators are subject to prosecution and other legal recourses for infringement. Any reproduction, adaptation or other use or disclosure whatsoever, in total or in part, and in any form or by any means whatsoever, strictly forbidden and requires the prior written approval of INNOVA. All data is the exclusive property of 9105-0732 QUEBEC INC. and under exclusive license to INNOVA and cannot be used nor disclosed in any way either without the prior written approval of INNOVA.</small>				
WEIGHT:	TITLE:			
186 Lb 84 Kg	Counterweight support			
COLOR:	Material:	SHEET(S):	PROJET:	Rev.
Zinc plated	Steel	2 / 5	A2305-90	01

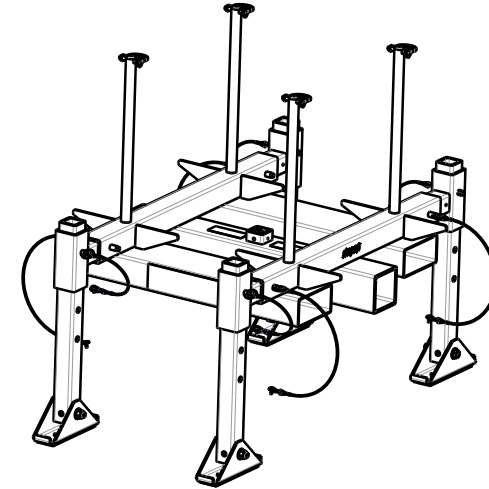
Product number: A2305-90

A2305-90 Configuration requirements (EN 795,TS16415)



PAT.NO.:		
PRODUITS DE SERVICE PUBLICS INNOVA INC. INNOVA PUBLIC UTILITY PRODUCTS INC.		
<small>© 9105-0732 QUEBEC INC. and under exclusive license to INNOVA PUBLIC UTILITY PRODUCTS INC. (hereafter « INNOVA »). All rights reserved. Protected under the Copyright Act of Canada and international treaties and agreements regarding copyrights. Violators are subject to prosecution and other legal recourses for infringement. Any reproduction, adaptation or other use or disclosure whatsoever, in totality or in part, and in any form or by any means whatsoever, strictly forbidden and requires the prior written approval of INNOVA. All data is the exclusive property of 9105-0732 QUEBEC INC. and under exclusive license to INNOVA and cannot be used nor disclosed in any way either without the prior written approval of INNOVA.</small>		
WEIGHT:	TITLE:	
186 Lb 84 Kg	Counterweight support	
COLOR:	Material:	SHEET(S):
Zinc plated	Steel	3 / 5
	PROJECT:	Rev.
	A2305-90	01

Product number: A2305-90



PAT.NO.:				
PRODUITS DE SERVICE PUBLICS INNOVA INC. INNOVA PUBLIC UTILITY PRODUCTS INC.				
<small>© 9105-0732 QUEBEC INC. and under exclusive license to INNOVA PUBLIC UTILITY PRODUCTS INC. (hereafter « INNOVA »). All rights reserved. Protected under the Copyright Act of Canada and international treaties and agreements regarding copyrights. Violators are subject to prosecution and other legal recourses for infringement. Any reproduction, adaptation or other use or disclosure whatsoever, in totally or in part, and in any form or by any means whatsoever, strictly forbidden and requires the prior written approval of INNOVA. All data is the exclusive property of 9105-0732 QUEBEC INC. and under exclusive license to INNOVA and cannot be used nor disclosed in any way either without the prior written approval of INNOVA.</small>				
WEIGHT:	TITLE:			
186 Lb	Counterweight support			
84 Kg				
COLOR:	MATERIAL:	SHEET(S):	PROJET:	Rev.
Zinc plated	Steel	4 / 5	A2305-90	01

SPECIFICATIONS

H This equipment is considered as part of a personal fall arrest system (PFAS) with a maximum working capacity of 164 Kg (360 lb).
 G It is only to be used in conjunction with a personal fall arrest system that limits the maximum arrest force (MAF).

STANDARDS

F Meets the following standards:
 OSHA Personal fall arrest system - 1910.66 App C
 ANSI Safety requirements for personal fall arrest system, subsystems and components Z359.1 (R1999) / 2007
 CAN/CSA Fall arresters, vertical lifelines, and rails Z259.2.1-98
 EN 795:2012 TYPE E , CEN/TS 16415:2013

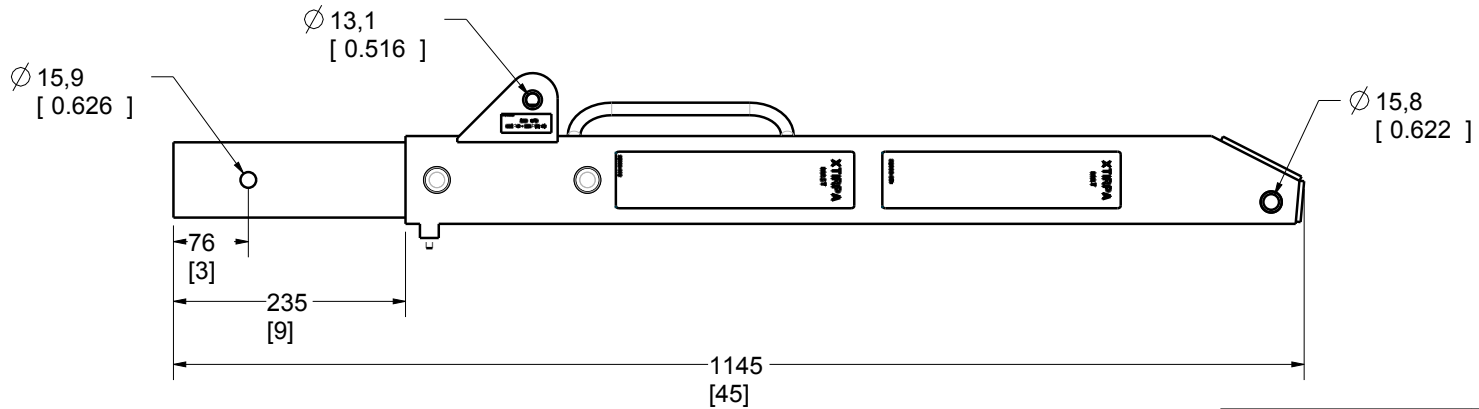
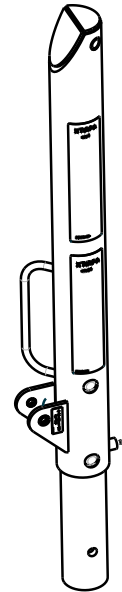
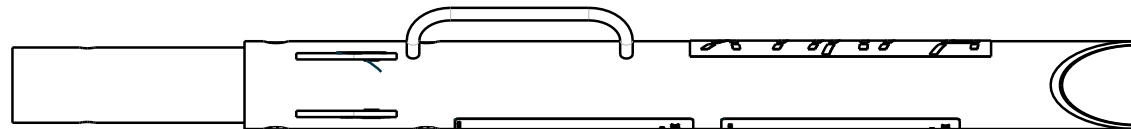
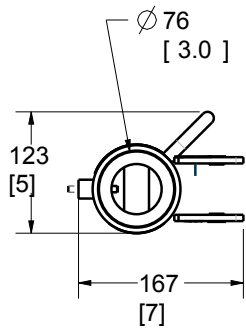
MATERIAL AND CONSTRUCTION

E Structure: Steel 44W
 Retaining rod for weight: Steel 44W
 Retaining pin for weght: Stainless steel
 Hardwares: Steel zinc plated
 D Finish : Clear trivalent zinc plated ASTM B-633-13, Type V, SC 3
 Welding Certification : CSA W59 & W47.1, AWS D1.6

RESTRICTIONS

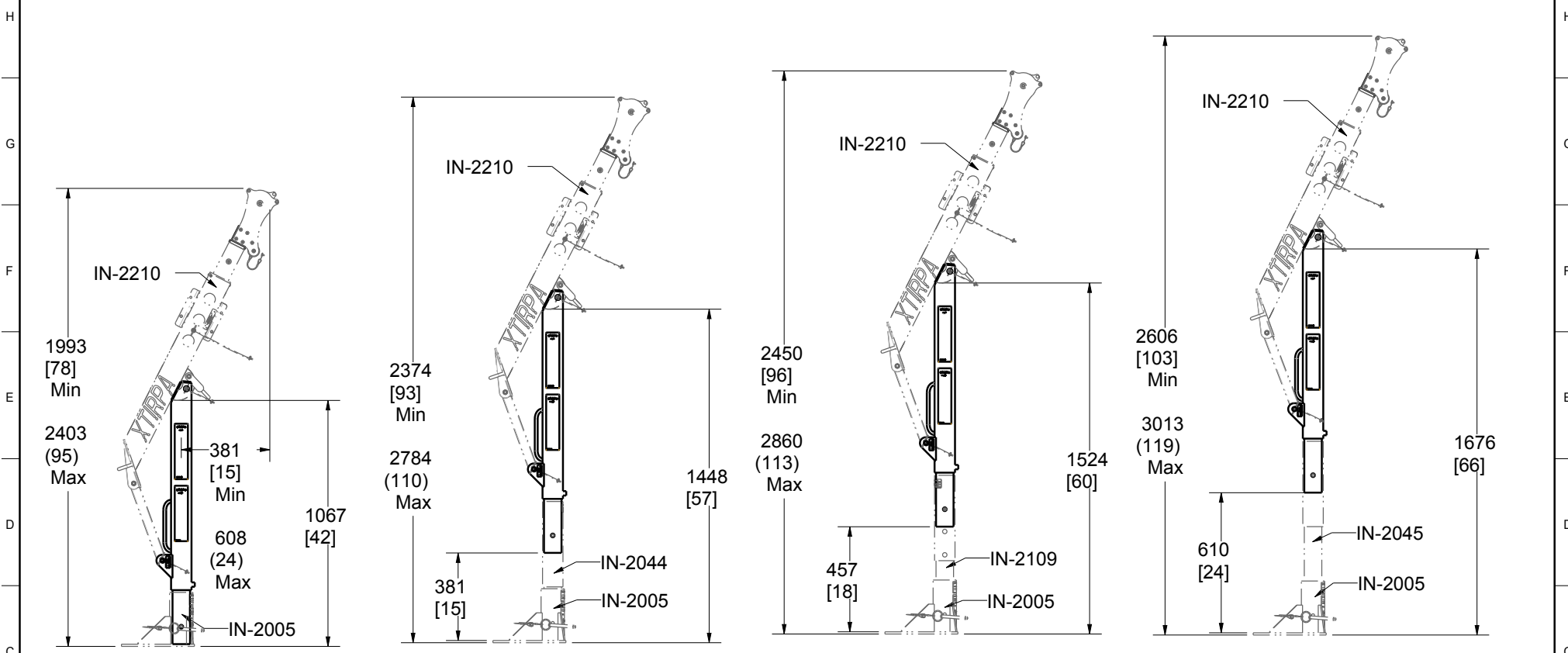
C This product is to be used only with products approved by Innova Public Utility Products inc.
 B This equipment must always be operated in a level position $\pm 5^\circ$ from the horizontal and supported by it's 4 levelling pads.
 A It is not permitted to use this system while casters are supporting the weight.

Product number: IN-2003



PAT. NO.: CA 2.479.513 US 7,213,715 B2 EP 03 744 296.9		©2006/02/16	©
PRODUITS DE SERVICE PUBLICS INNOVA INC. INNOVA PUBLIC UTILITY PRODUCTS INC.			
<small> © 9105-0732 QUEBEC INC. and under exclusive license to INNOVA PUBLIC UTILITY PRODUCTS INC. (hereafter « INNOVA »). All rights reserved. Protected under the Copyright Act of Canada and international treaties and agreements regarding copyrights. Violators are subject to prosecution and other legal recourses for infringement. Any reproduction, adaptation or other use or disclosure whatsoever, in totality or in part, and in any form or by any means whatsoever, strictly forbidden and requires the prior written approval of INNOVA. All data is the exclusive property of 9105-0732 QUEBEC INC. and under exclusive license to INNOVA and cannot be used nor disclosed in any way either without the prior written approval of INNOVA. </small>			
WEIGHT: 23 Lb 10 Kg	TITLE: 76mm (3") Mast for Davit Arm IN-2210		
COLOR: Safety Yellow	MATERIAL: Aluminum	SHEET(S): 1 / 4	PROJECT: IN-2003

Product number: IN-2003



PAT. NO.: CA 2,479,513 US 7,213,715 B2 EP 03 744 296.9		©2006/02/16	©
PRODUITS DE SERVICE PUBLICS INNOVA INC. INNOVA PUBLIC UTILITY PRODUCTS INC.			
<small>© 9105-0732 QUEBEC INC. and under exclusive license to INNOVA PUBLIC UTILITY PRODUCTS INC. (hereafter « INNOVA »). All rights reserved. Protected under the Copyright Act of Canada and international treaties and agreements regarding copyrights. Violators are subject to prosecution and other legal recourses for infringement. Any reproduction, adaptation or other use or disclosure whatsoever, in totality or in part, and in any form or by any means whatsoever, strictly forbidden and requires the prior written approval of INNOVA. All data is the exclusive property of 9105-0732 QUEBEC INC. and under exclusive license to INNOVA and cannot be used nor disclosed in any way either without the prior written approval of INNOVA.</small>			
WEIGHT: 23 Lb 10 Kg	TITLE: 76mm (3") Mast for Davit Arm IN-2210		
COLOR: Safety Yellow	MATERIAL: Aluminum	SHEET(S): 2 / 4	PROJECT: IN-2003

SPECIFICATIONS

This equipment is considered as part of a personal fall arrest system (PFAS) with a maximum working capacity of 164 Kg (360 lb).

It is only to be used in conjunction with a personal fall arrest system that limits the maximum arrest force (MAF).

Working load (mass):
 With Davit Arm IN-2002 or IN-2210 : 164 kg (360 lb)

Max capacity without deformation:
 With Davit Arm IN-2002 or IN-2210 : 16298 N (3664 lbf)
 With Davit Arm IN-2002 or IN-2210 / extended Mast IN-2044 or IN-2045 or IN-2109 : 16298 N (3664 lbf)

Maximum Moment : 9935 N-m (87,936 lbf-in)

STANDARDS

Meets the following standards:
 OSHA Personal fall arrest system - 1910.66 App C
 ANSI Safety requirements for personal fall arrest system, subsystems and components Z359.1 (R1999)
 CAN/CSA Fall arresters, vertical lifelines, and rails Z259.2 1-98
 CE EN 795: 2012 Type A , B and E.

MATERIAL AND CONSTRUCTION

Mast : Aluminum 6061-T6
 Anchorage plates : Aluminum 6061-T6
 Finish : Yellow security powder paint with metal protection base.
 Welding certification: CSA W47,2M

RESTRICTIONS

This product is to be used only with products approved by Inova Public Utility Products Inc.

IMPORTANT :

**The positioning pins must always be in place when maneuvering personnel. Otherwise, serious injuries may occur.

Periodic inspections of hardware must be done. In the occurrence of a fall or the safety of the equipment is in doubt, equipment must be immediately removed from service and inspected by qualified personnel before reuse.

** This equipment must always be operated in a level position.

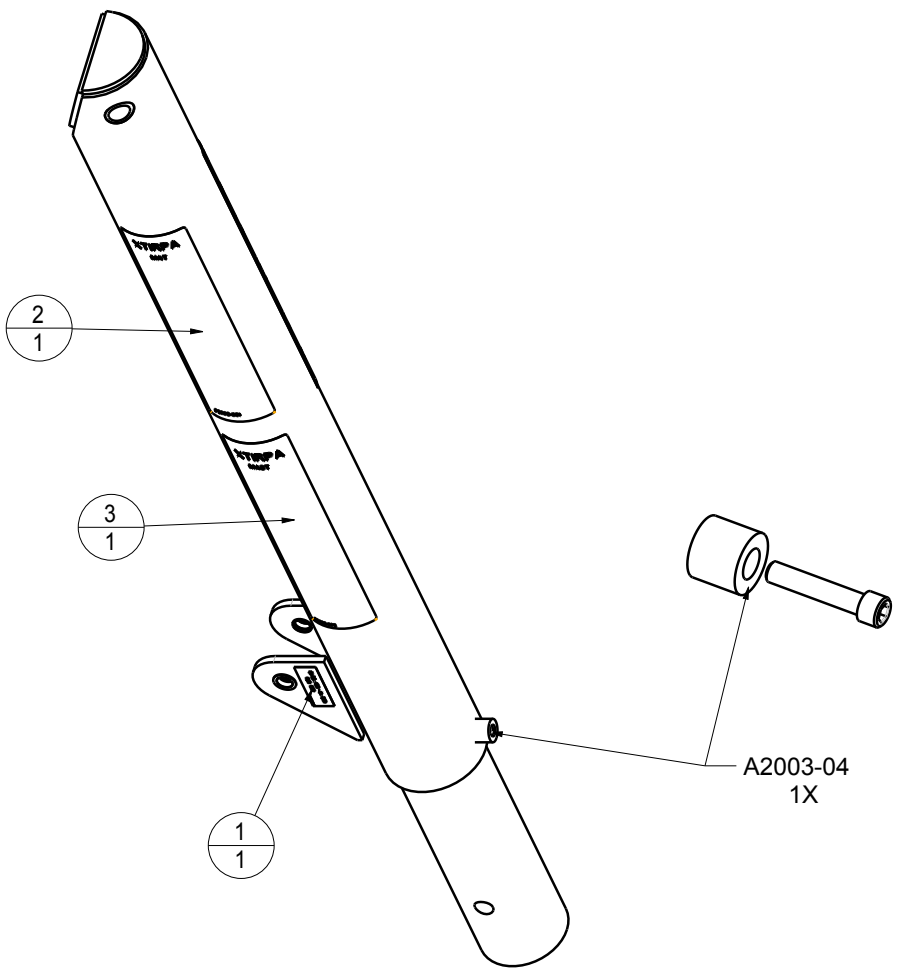
Product number: IN-2003



PAT. NO.:		B2006/02/16 Q	
CA 2 479 513	US 7,213,715 B2		EP 03 744 296 9
PRODUITS PS SERVICE PUBLICS INNOVA INC. INNOVA PUBLIC UTILITY PRODUCTS INC.			
<small>© 2006 INNOVA INC. and under licence to the INNOVA PUBLIC UTILITY PRODUCTS INC. (Innova) a 100% co. All rights reserved. Protected under the Copyright Act of Canada and International Treaties and Agreements regarding Copyright. Customers are subject to installation and other legal requirements for safe installation, maintenance and use. See our literature whenever in contact with us, and in any case to the terms and conditions strictly applicable and required to apply to the approval of INNOVA and also to the exclusive property of INNOVA/INNOVA INC. and under licence to the INNOVA and cannot be used nor disclosed in any way other than the one written approval of INNOVA.</small>			
WEIGHT:	TITLE:		
23 lb	76mm (3") Mast for davit arm IN-2210		
10 kg			
TRADE:	MATERIAL:	DRAWING:	PROJECT:
Safety yellow	Aluminium	3 / 4	IN-2003

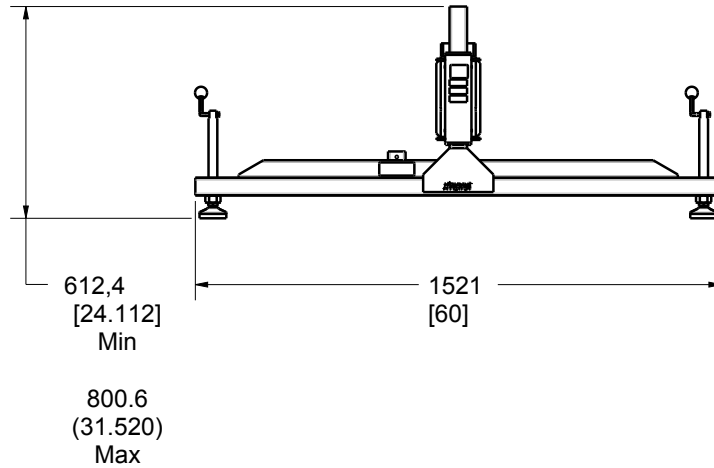
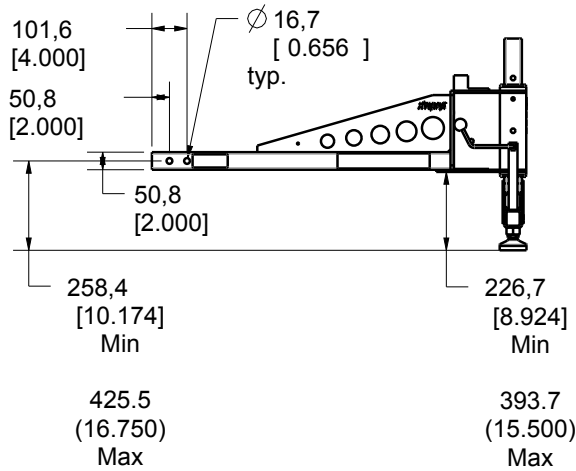
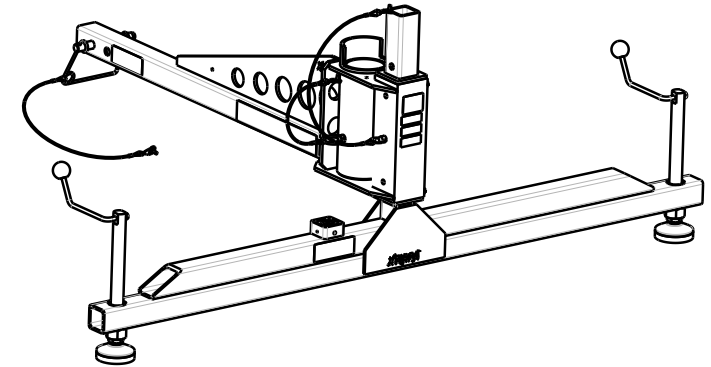
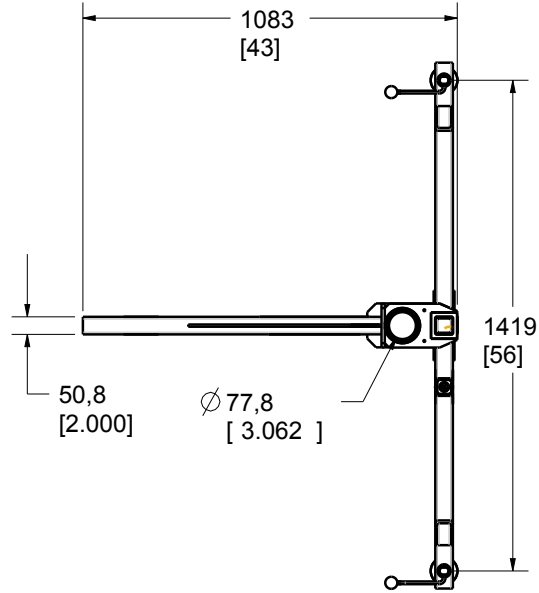
Product number: **IN-2003**

3	1	S2003-002	RevE	Label "Instruction" English
2	1	S2003-001	RevE	Label "Instruction" French
1	1	S2003-009	REVD	Security Label CE Class A1
IDX	QTE	COMPONENT	REV	DESCRIPTION



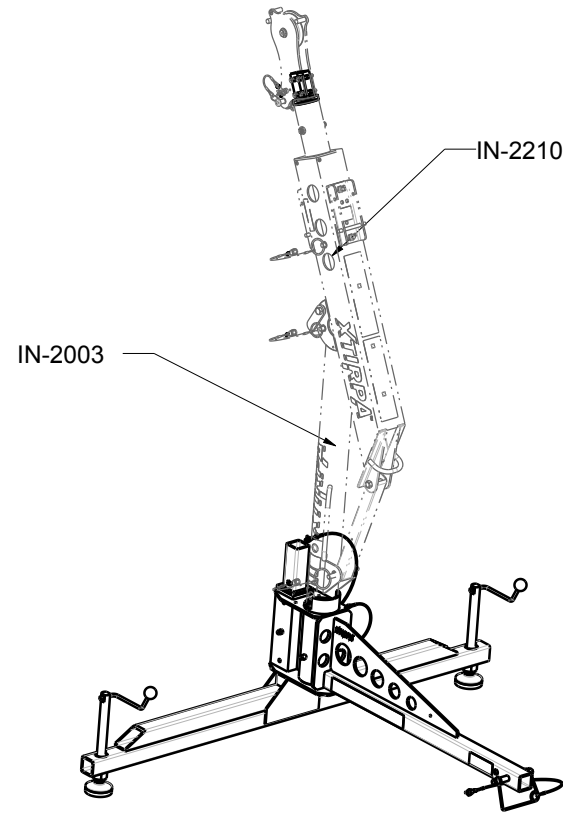
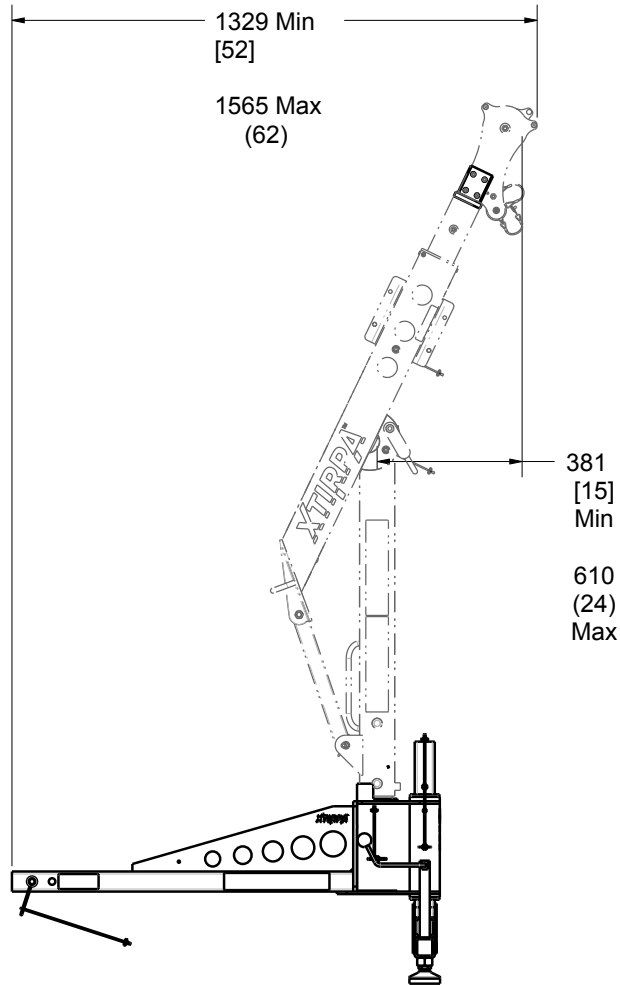
PAT. NO.:		©2006/02/16		©
CA 2,479,513				
US 7,213,715 B2				
EP 03 744 296.9				
PRODUITS DE SERVICE PUBLICS INNOVA INC. INNOVA PUBLIC UTILITY PRODUCTS INC.				
<small>© 9105-0732 QUEBEC INC. and under exclusive license to INNOVA PUBLIC UTILITY PRODUCTS INC. (hereafter « INNOVA »). All rights reserved. Protected under the Copyright Act of Canada and international treaties and agreements regarding copyrights. Violators are subject to prosecution and other legal recourses for infringement. Any reproduction, adaptation or other use or disclosure whatsoever, in totality or in part, and in any form or by any means whatsoever, strictly forbidden and requires the prior written approval of INNOVA. All data is the exclusive property of 9105-0732 QUEBEC INC. and under exclusive license to INNOVA and cannot be used nor disclosed in any way either without the prior written approval of INNOVA.</small>				
WEIGHT:		TITLE:		
23 Lb		76mm (3") Mast for Davit Arm IN-2210		
10 Kg				
COLOR:	MATERIAL:	SHEET(S):	PROJECT:	
Safety Yellow	Aluminum	4 / 4	IN-2003	

Product number: IN-2204



PAT. NO.:		©15/07/2009	©
PRODUITS DE SERVICE PUBLICS INNOVA INC. INNOVA PUBLIC UTILITY PRODUCTS INC.			
<small>© 9105-0732 QUEBEC INC. and under exclusive license to INNOVA PUBLIC UTILITY PRODUCTS INC. (hereafter « INNOVA »). All rights reserved. Protected under the Copyright Act of Canada and international treaties and agreements regarding copyrights. Violators are subject to prosecution and other legal recourses for infringement. Any reproduction, adaptation or other use or disclosure whatsoever, in totality or in part, and in any form or by any means whatsoever, strictly forbidden and requires the prior written approval of INNOVA. All data is the exclusive property of 9105-0732 QUEBEC INC. and under exclusive license to INNOVA and cannot be used nor disclosed in any way either without the prior written approval of INNOVA.</small>			
WEIGHT:		TITLE:	
45 Lb 20 Kg		76mm (3") Hitch Mount With 1524mm (60") Stabilizer	
COLOR:	MATERIAL:	SHEET(S):	PROJECT:
Safety Yellow	Aluminum	1 / 4	IN-2204

Product number: IN-2204



PAT. NO.:		©15/07/2009	©
PRODUITS DE SERVICE PUBLICS INNOVA INC. INNOVA PUBLIC UTILITY PRODUCTS INC.			
<small>© 9105-0732 QUEBEC INC. and under exclusive license to INNOVA PUBLIC UTILITY PRODUCTS INC. (hereafter « INNOVA »). All rights reserved. Protected under the Copyright Act of Canada and international treaties and agreements regarding copyrights. Violators are subject to prosecution and other legal recourses for infringement. Any reproduction, adaptation or other use or disclosure whatsoever, in totality or in part, and in any form or by any means whatsoever, strictly forbidden and requires the prior written approval of INNOVA. All data is the exclusive property of 9105-0732 QUEBEC INC. and under exclusive license to INNOVA and cannot be used nor disclosed in any way either without the prior written approval of INNOVA.</small>			
WEIGHT:	TITLE:		
45 Lb	76mm (3") Hitch Mount		
20 Kg	With 1524mm (60") Stabilizer		
COLOR:	MATERIAL:	SHEET(S):	PROJECT:
Safety Yellow	Aluminum	2 / 4	IN-2204

8

7

6

5

4

3

2

1

Product number: IN-2204

SPECIFICATIONS

This equipment is considered as part of a personal fall arrest system (PFAS) with a maximum working capacity of 164 Kg (360 lb).

It is only to be used in conjunction with a personal fall arrest system that limits the maximum arrest force (MAF).

Working load (mass) and moment: With mast IN-2003 and Davit Arm IN-2002 or IN-2210: 164kg (360 lb), 976 N-m (8,640 lbf-in).

Max Capacity without deformation: With mast IN-2003 and Davit Arm IN-2002 or IN-2210: 16,014 N (3,600 lbf), 9,762 N-m (86,400 lbf-in).

Note: Hitch vehicle minimum weight or structure capacity :2,727kg (6,000 lb).

STANDARDS

Meets the following standards:
OSHA Personal fall arrest system - 1910.68 App C
ANSI Safety requirements for personal fall arrest system, subsystems and components 2359.1 (R1999) / 2007
CAN/CSA Fall arresters, vertical lifelines, and rails 2259.2.1-98
CE EN 795: 2012 Type A,B and E.

MATERIAL AND CONSTRUCTION

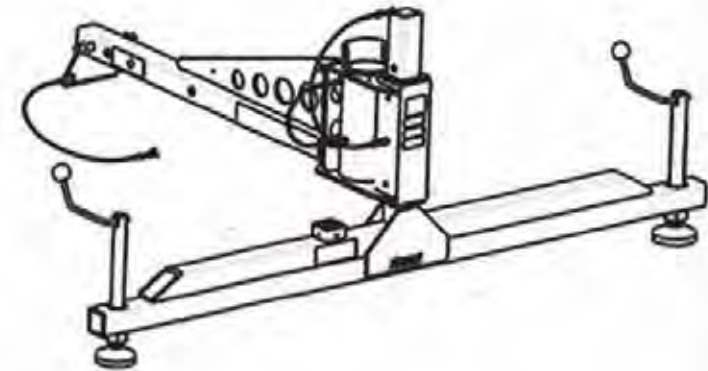
Extensions and Mast Sleeve : Aluminum 6061-T6
Extension sliders : Black Delrin
Positioning levels and Hardware: Zinc Plated Steel, Stainless Steel
Finish : Yellow security powder paint with metal protection base.
Welding certification: CSA W47,2M

RESTRICTIONS

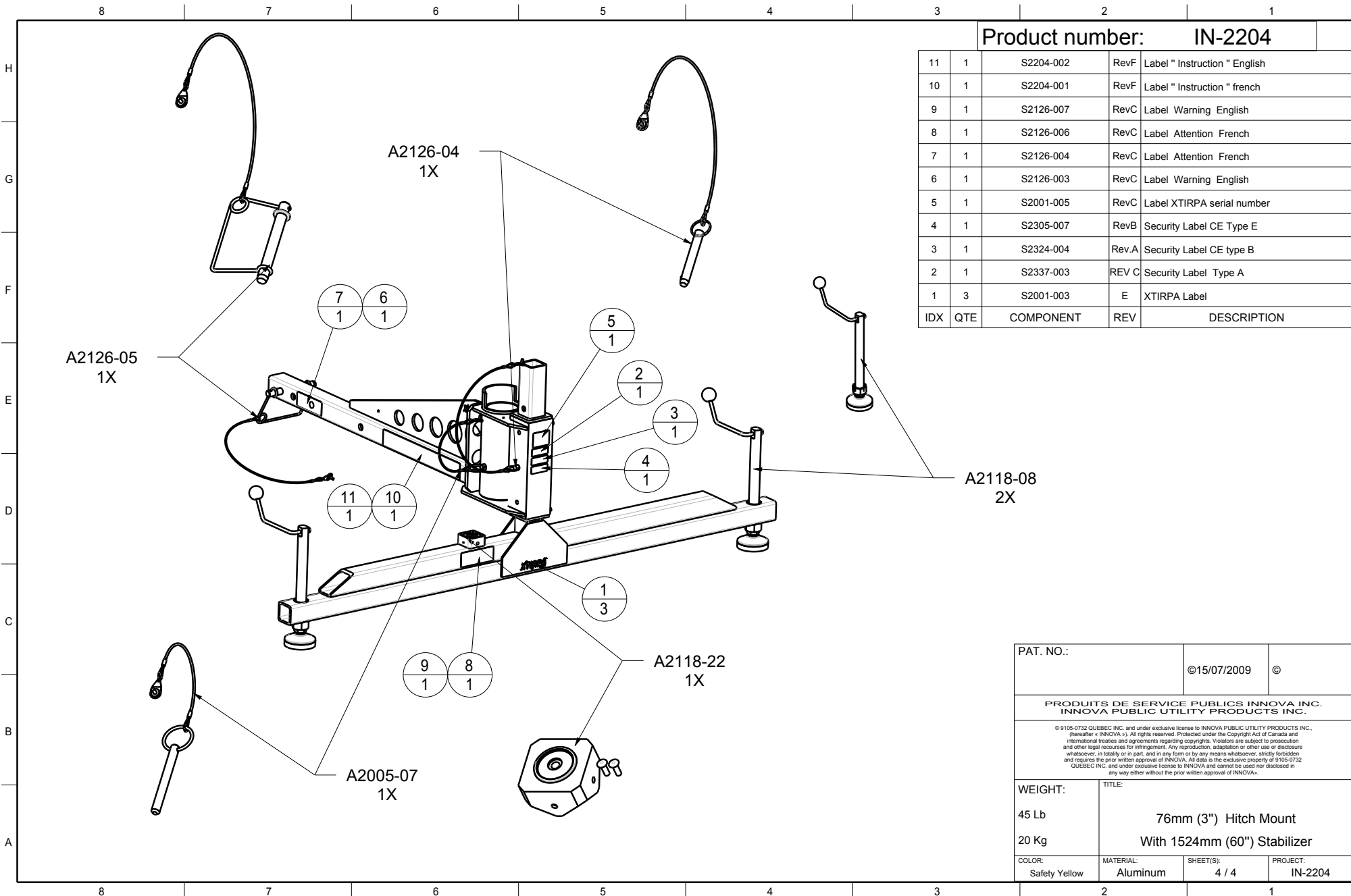
This product is to be used only with products approved by Innova Public Utility Products inc.

IMPORTANT :

**The positioning pins must always be in place when manoeuvring personnel. Otherwise, serious injuries may occur.
Periodic inspections of hardware must be done.
In the occurrence of a fall or the safety of the equipment is in doubt, equipment must be immediately removed from service and inspected by qualified personnel before reuse.
** This equipment must always be operated in a level position.



PAT. NO.:		015/97/2005 e	
PRODUCTS OF SERVICE PUBLICS INNOVA INC. INNOVA PUBLIC UTILITY PRODUCTS INC.			
<small>A trademark of INNOVA INC. and other markings of INNOVA PUBLIC UTILITY PRODUCTS INC. are hereby acknowledged. All rights reserved. Restricted under the Copyright Act of Canada and International Trade Law and regulations regarding copyright. Drawings are subject to interpretation and other legal requirements for interpretation. Any reproduction, adaptation or other use or distribution, in whole or in part, and in any form or by any means whatsoever, without the prior written consent of INNOVA INC. and under no circumstances for INNOVA and cannot be sold nor otherwise be used in any way without the prior written consent of INNOVA.</small>			
WEIGHT:	TITLE:		
45 Lb	76mm (3") Hitch Mount		
26 Kg	With 1524mm (60") Stabilizer		
COLOR:	MATERIAL:	QUANTITY:	PROJECT:
Safety Yellow	Aluminium	3 / 4	IN-2204



Product number: **IN-2204**

IDX	QTE	COMPONENT	REV	DESCRIPTION
11	1	S2204-002	RevF	Label " Instruction " English
10	1	S2204-001	RevF	Label " Instruction " french
9	1	S2126-007	RevC	Label Warning English
8	1	S2126-006	RevC	Label Attention French
7	1	S2126-004	RevC	Label Attention French
6	1	S2126-003	RevC	Label Warning English
5	1	S2001-005	RevC	Label XTIRPA serial number
4	1	S2305-007	RevB	Security Label CE Type E
3	1	S2324-004	Rev.A	Security Label CE type B
2	1	S2337-003	REV C	Security Label Type A
1	3	S2001-003	E	XTIRPA Label

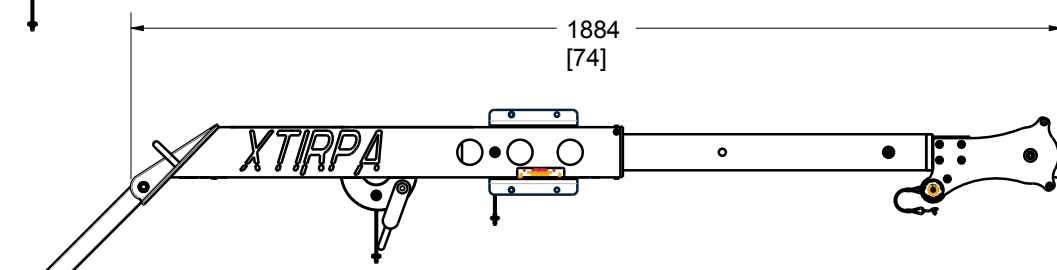
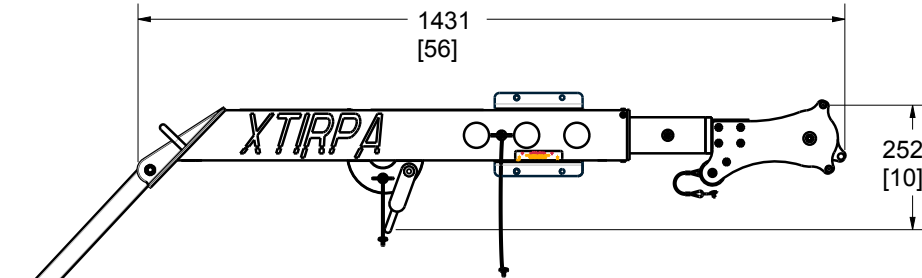
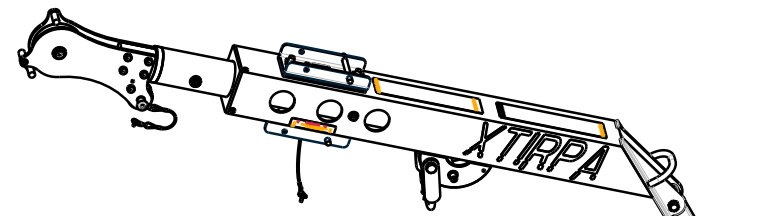
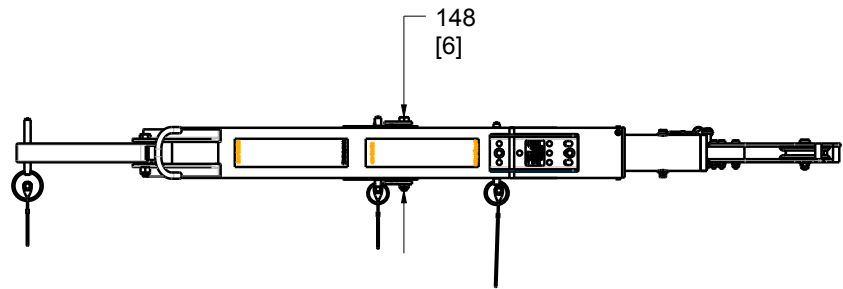
PAT. NO.:		©15/07/2009	©
PRODUITS DE SERVICE PUBLICS INNOVA INC. INNOVA PUBLIC UTILITY PRODUCTS INC.			
<small>© 9105-0732 QUEBEC INC. and under exclusive license to INNOVA PUBLIC UTILITY PRODUCTS INC. (hereafter « INNOVA »). All rights reserved. Protected under the Copyright Act of Canada and international treaties and agreements regarding copyrights. Violators are subject to prosecution and other legal recourses for infringement. Any reproduction, adaptation or other use or disclosure whatsoever, in totality or in part, and in any form or by any means whatsoever, strictly forbidden and requires the prior written approval of INNOVA. All data is the exclusive property of 9105-0732 QUEBEC INC. and under exclusive license to INNOVA and cannot be used nor disclosed in any way either without the prior written approval of INNOVA.</small>			
WEIGHT:	TITLE:		
45 Lb	76mm (3") Hitch Mount		
20 Kg	With 1524mm (60") Stabilizer		
COLOR:	MATERIAL:	SHEET(S):	PROJECT:
Safety Yellow	Aluminum	4 / 4	IN-2204

Product number: IN-2210

8 7 6 5 4 3 2 1

H
G
F
E
D
C
B
A

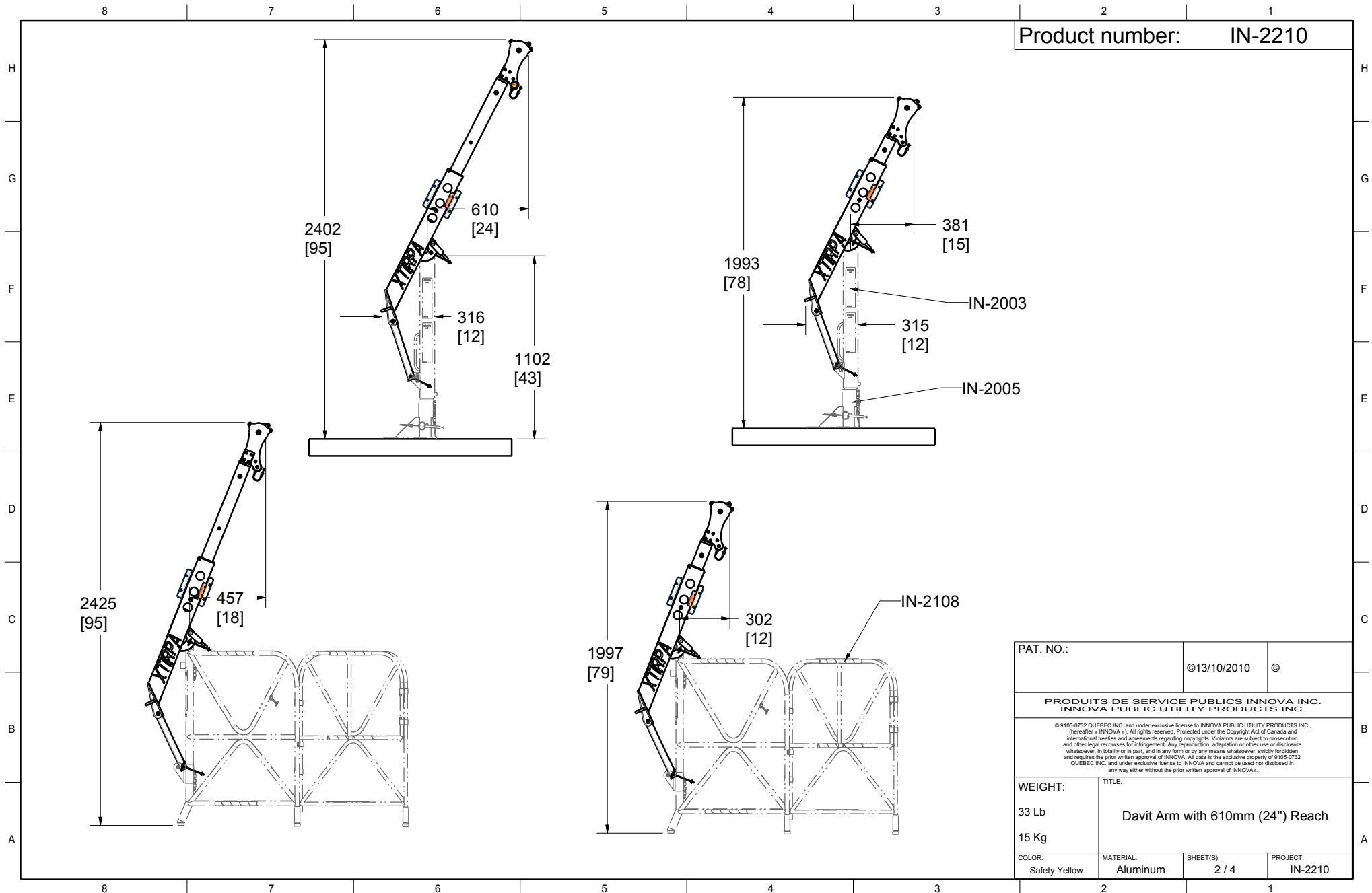
H
G
F
E
D
C
B
A



8 7 6 5 4 3 2 1

PAT. NO.:		©13/10/2010	©
PRODUITS DE SERVICE PUBLICS INNOVA INC. INNOVA PUBLIC UTILITY PRODUCTS INC.			
<small>© 9105-0732 QUEBEC INC. and under exclusive license to INNOVA PUBLIC UTILITY PRODUCTS INC. (hereafter « INNOVA »). All rights reserved. Protected under the Copyright Act of Canada and international treaties and agreements regarding copyrights. Violations are subject to prosecution and other legal recourses for infringement. Any reproduction, adaptation or other use or disclosure whatsoever, in totality or in part, and in any form or by any means whatsoever, strictly forbidden and requires the prior written approval of INNOVA. All data is the exclusive property of 9105-0732 QUEBEC INC. and under exclusive license to INNOVA and cannot be used nor disclosed in any way either without the prior written approval of INNOVA.</small>			
WEIGHT:		TITLE:	
33 Lb		Davit Arm with 610mm (24") Reach	
15 Kg			
COLOR:	MATERIAL:	SHEET(S):	PROJECT:
Safety Yellow	Aluminum	1 / 4	IN-2210

Product number: IN-2210



PAT. NO.:		©13/10/2010	©
PRODUITS DE SERVICE PUBLICS INNOVA INC. INNOVA PUBLIC UTILITY PRODUCTS INC.			
<small>© 9105-0732 QUEBEC INC. and under exclusive license to INNOVA PUBLIC UTILITY PRODUCTS INC. (hereafter « INNOVA »). All rights reserved. Protected under the Copyright Act of Canada and international treaties and agreements regarding copyrights. Violators are subject to prosecution and other legal recourses for infringement. Any reproduction, adaptation or other use or disclosure whatsoever, in totality or in part, and in any form or by any means whatsoever, strictly forbidden and requires the prior written approval of INNOVA. All data is the exclusive property of 9105-0732 QUEBEC INC. and under exclusive license to INNOVA and cannot be used nor disclosed in any way either without the prior written approval of INNOVA.</small>			
WEIGHT:		TITLE:	
33 Lb		Davit Arm with 610mm (24") Reach	
15 Kg			
COLOR:	MATERIAL:	SHEET(S):	PROJECT:
Safety Yellow	Aluminum	2 / 4	IN-2210

Product number: IN-2210

SPECIFICATIONS

H This equipment is considered as part of a personal fall arrest system (PFAS) with a maximum working capacity of 164 Kg (360 lb).

It is only to be used in conjunction with a personal fall arrest system that limits the maximum arrest force (MAF).

G Working load (mass) : In position 1, 2 or 3
 With barricade IN-2108 and IN-2001: 191Kg (420 lb)
 With mast IN-2003: 164 Kg (360 lb)

Max Capacity with lifeline winch in position 1 and 2
 With barricade IN-2108 and IN-2001: 19,172 N (4,310 lbf)
 With mast IN-2003: 16,298 N (3,664 lbf)

F Max Capacity with material handling in position 3
 With barricade IN-2108 and IN-2001: 9,786 N (2,200 lbf)
 With mast IN-2003: 8,007 N (1,800 lbf)
 Max Capacity of anchor point: 22,241 N (5,000 lbf)

STANDARDS

Meets the following standards:
 OSHA Personal fall arrest system: 1910.66 App C
E ANSI Safety requirements for personal fall arrest system, Subsystems and components Z359.1 (R1999) 2007
 CAN/CSA Fall arresters, vertical lifelines, and rails Z259.2.1-98
 CE EN 795:2012 Type A , B and E.

MATERIAL AND CONSTRUCTION

D Extension and guide tubes: Aluminum 6061-T6
 Davit-Arm link = Aluminum 6061-T6
 Anchorage hooks: 304 Stainless Steel
 Hardware: Zinc plated steel / Stainless Steel
 Guide tube sliders: UHMW
 Pulley: Black Acetal
 Finish: Yellow security powder paint with metal protection base.

C Welding Certification: CSA W47.2M

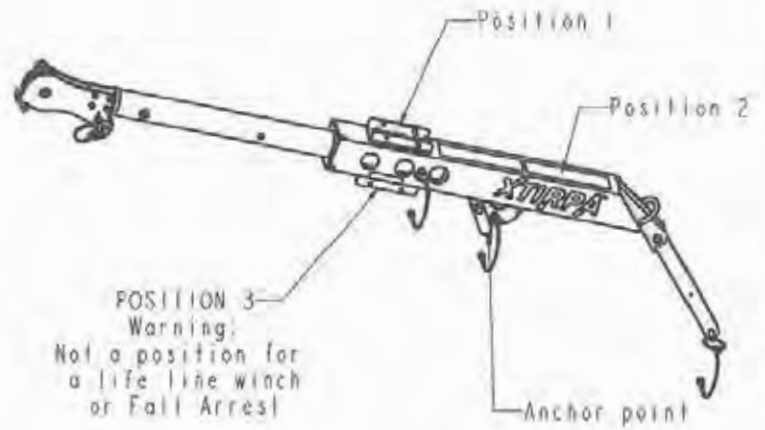
RESTRICTIONS

This product is to be used only with products approved by Innova Public Utility Products inc.

IMPORTANT

******The positioning pins must always be in place when maneuvering personnel. Otherwise, serious injuries may occur.
 Periodic inspections of hardware must be done.
 In the occurrence of a fall or the safety of the equipment is in doubt, equipment must be immediately removed from service and inspected by qualified personnel before reuse.

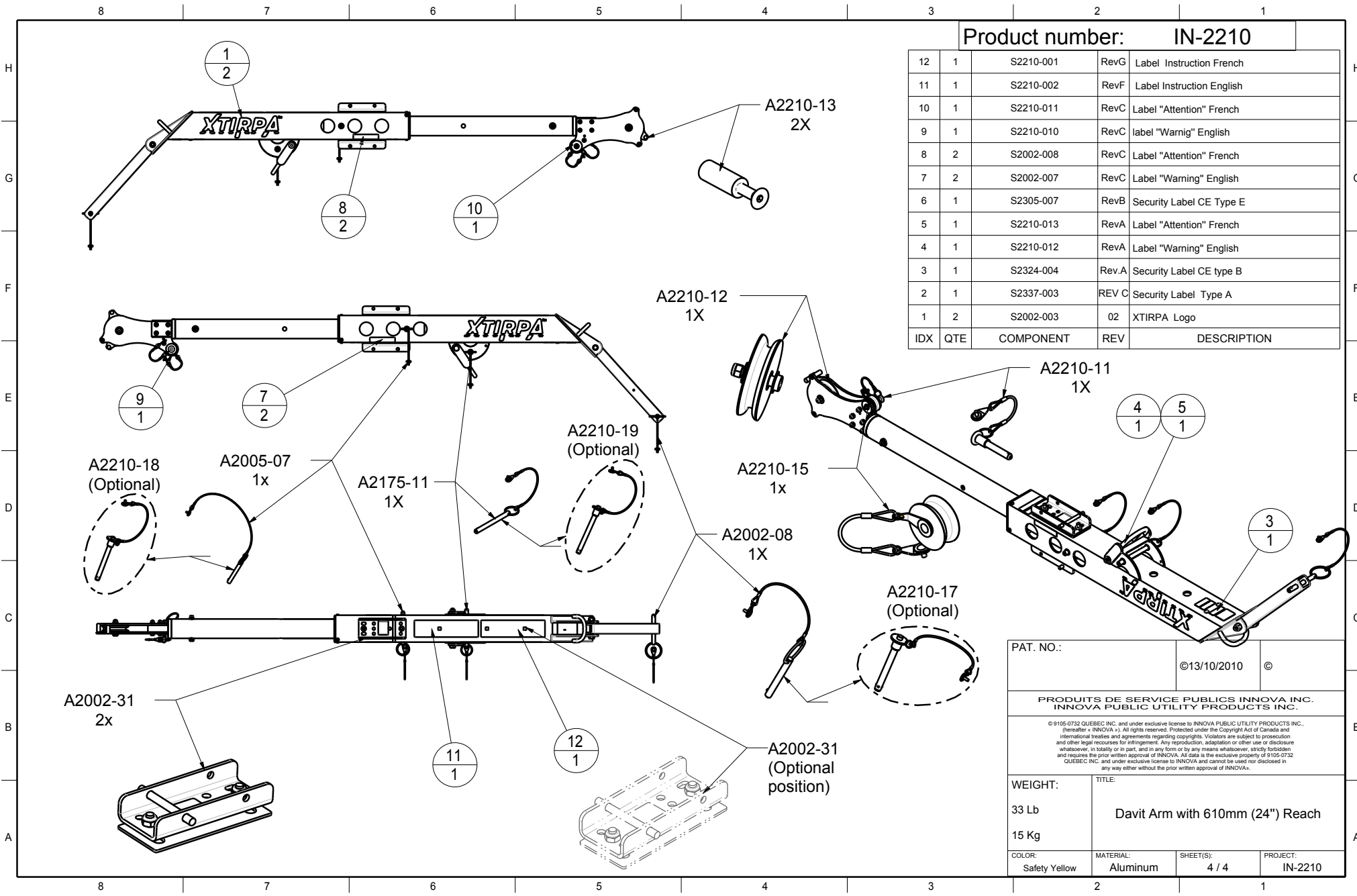
****** This equipment must always be operated in a level position.



PAT. NO.:		013/10/2010 0	
PRODUITS DE SERVICE PUBLICS INNOVA INC. INNOVA PUBLIC UTILITY PRODUCTS INC.			
<small>© 2010-2010 INNOVA INC. and under exclusive license to INNOVA PUBLIC UTILITY PRODUCTS INC., all rights reserved. Reproduction, translation, distribution, or other use in any form, without the prior written consent of INNOVA INC. is prohibited. The price of this document is \$100.00. All other rights reserved. INNOVA INC. and its subsidiaries are not responsible for any damage or injury caused by the use of this equipment. INNOVA INC. and its subsidiaries are not responsible for any damage or injury caused by the use of this equipment. INNOVA INC. and its subsidiaries are not responsible for any damage or injury caused by the use of this equipment.</small>			
WEIGHT:	TITLE:		
33 lb 15 Kg	Davit Arm with 610mm (24") Reach		
COLOR:	MATERIAL:	SHEET:	PROJECT:
Safety yellow	Aluminum	3 / 4	IN-2210

Product number: **IN-2210**

IDX	QTE	COMPONENT	REV	DESCRIPTION
12	1	S2210-001	RevG	Label Instruction French
11	1	S2210-002	RevF	Label Instruction English
10	1	S2210-011	RevC	Label "Attention" French
9	1	S2210-010	RevC	label "Warnig" English
8	2	S2002-008	RevC	Label "Attention" French
7	2	S2002-007	RevC	Label "Warning" English
6	1	S2305-007	RevB	Security Label CE Type E
5	1	S2210-013	RevA	Label "Attention" French
4	1	S2210-012	RevA	Label "Warning" English
3	1	S2324-004	Rev.A	Security Label CE type B
2	1	S2337-003	REV C	Security Label Type A
1	2	S2002-003	02	XTIRPA Logo



PAT. NO.:		©13/10/2010	©
PRODUITS DE SERVICE PUBLICS INNOVA INC. INNOVA PUBLIC UTILITY PRODUCTS INC.			
<small>© 9105-0732 QUEBEC INC. and under exclusive license to INNOVA PUBLIC UTILITY PRODUCTS INC. (hereafter « INNOVA »). All rights reserved. Protected under the Copyright Act of Canada and international treaties and agreements regarding copyrights. Violators are subject to prosecution and other legal recourses for infringement. Any reproduction, adaptation or other use or disclosure whatsoever, in totality or in part, and in any form or by any means whatsoever, strictly forbidden and requires the prior written approval of INNOVA. All data is the exclusive property of 9105-0732 QUEBEC INC. and under exclusive license to INNOVA and cannot be used nor disclosed in any way either without the prior written approval of INNOVA.</small>			
WEIGHT:	TITLE:		
33 Lb	Davit Arm with 610mm (24") Reach		
15 Kg			
COLOR:	MATERIAL:	SHEET(S):	PROJECT:
Safety Yellow	Aluminum	4 / 4	IN-2210